



## Levett Square, TW9

£2,000 Per calendar month

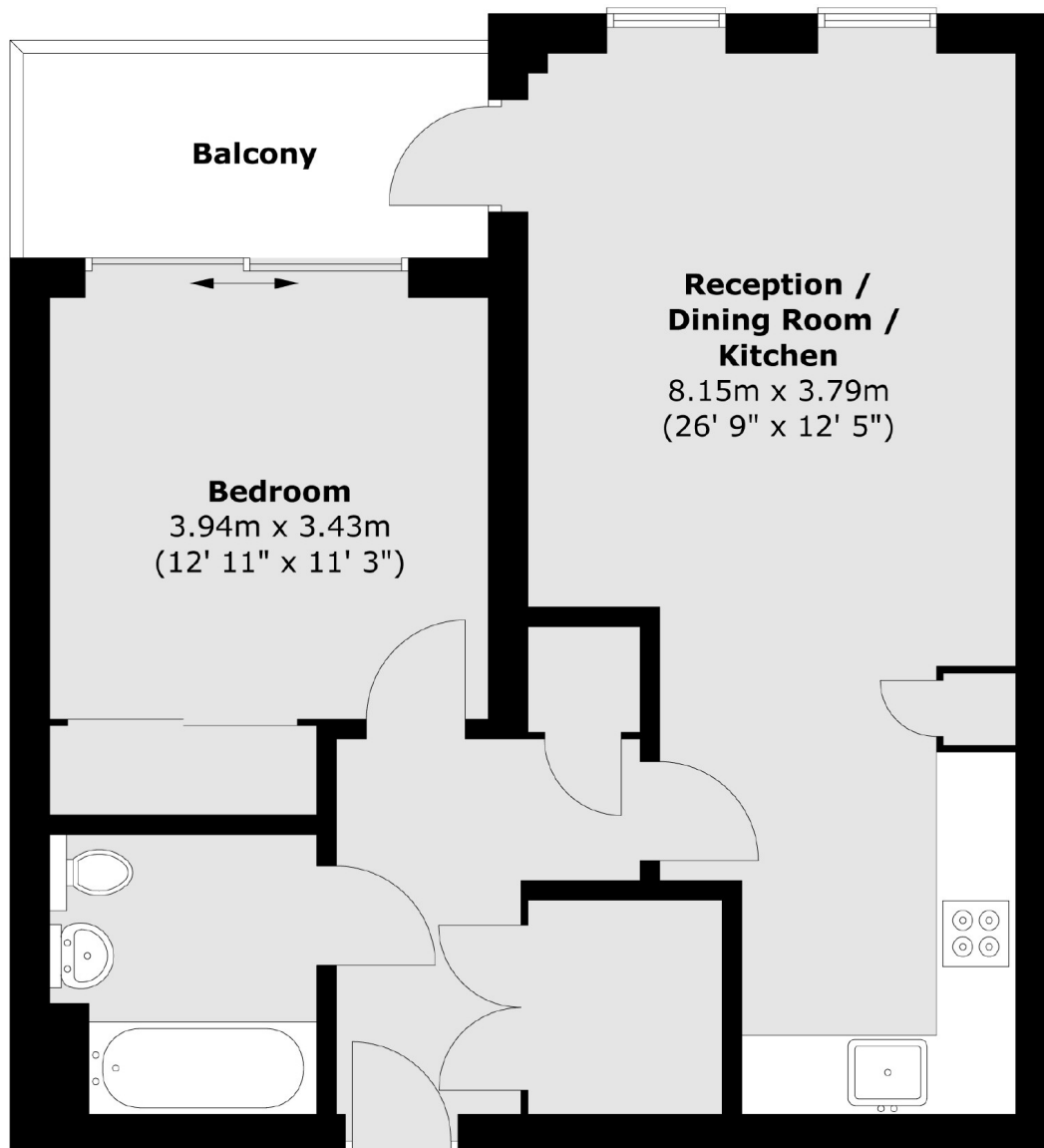
A beautifully presented one double bedroom apartment located within the popular Levett Square development. The property has a large balcony, underground allocated parking, secure bicycle storage and is furnished to an immaculate standard.

Located within easy reach of the Thames Path, Kew Retail Park, Kew Gardens Station providing District Line and Overground services and the local village shopping amenities.

### Features

- One Bedroom
- Modern Kitchen
- Underground Parking
- Concierge
- Secure Bicycle Storage
- Balcony

Levett Square,  
Kew, TW9



Total area (approx.) : 55.2 sq. m (594 sq. ft)  
Total balcony area (approx.) : 5.3 sq. m (57 sq. ft)