



## Sandycombe Road, TW9

£1,800 Per calendar month

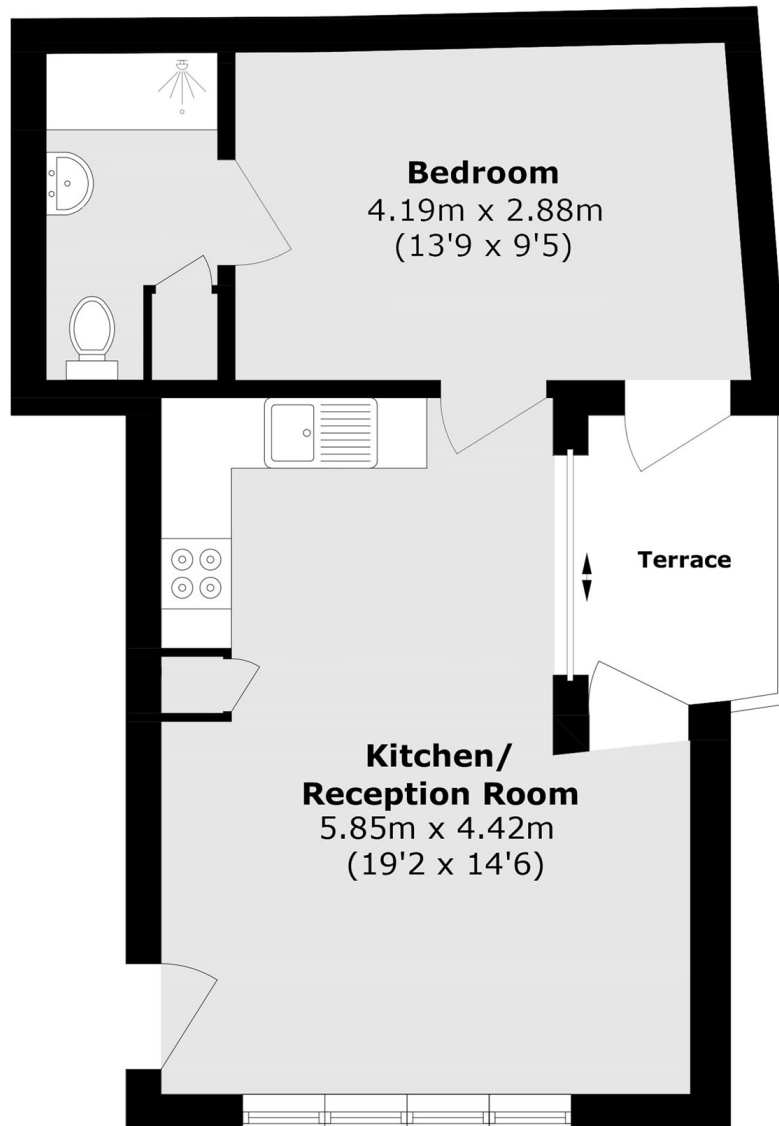
A beautifully designed one double bedroom apartment on the ground floor of this property near Kew Gardens Station. The property has been renovated throughout, and includes an open plan living kitchen, bathroom and bedroom.

Sandycombe Road is ideally located for the shops and restaurants of Kew Village, as well as the Royal Botanic Gardens Kew and Richmond Park. The commuter is equally well catered for with Kew Gardens, Richmond and North Sheen stations close to hand with additional excellent bus services to Central London.

### Features

- One Bedroom
- Newly Renovated
- Modern Open Plan Kitchen
- Kew Village Location
- Outdoor Space
- Wooden Flooring

# Sandycombe Road, Kew, TW9



Total area (approx.): 40.1 sq. m (431.6 sq. ft)

Terrace area (approx.): 4.5 sq. m (48.4 sq. ft)