

Melliss Avenue, TW9

£2,000 Per calendar month

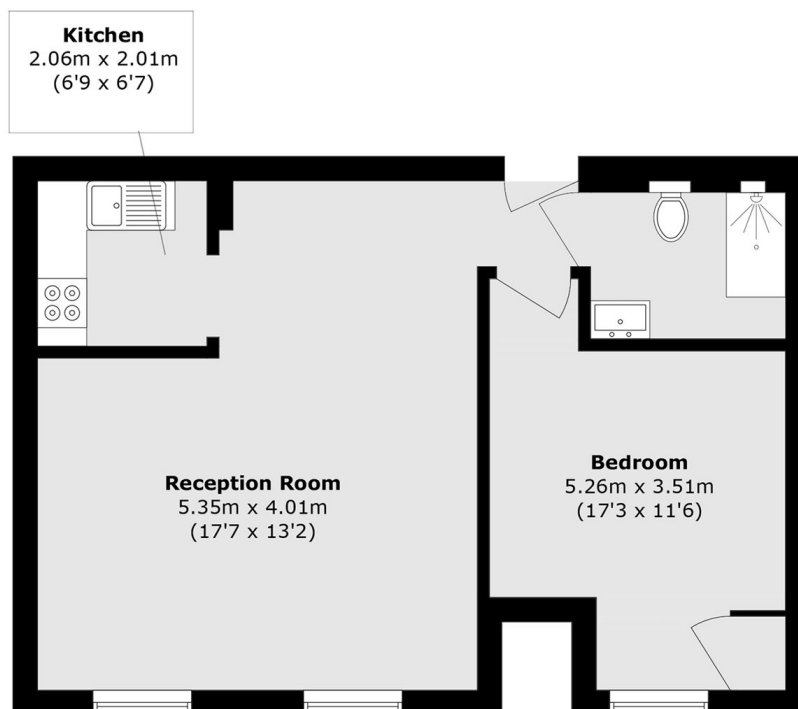
A well-presented modern apartment ideally situated on the desirable Kew Riverside development. The bright and airy accommodation comprises one double bedroom, large living room lounge, separate kitchen and modern bathroom.

Located a short distance from Kew Retail Park and the lovely footpath along the River Thames. While Richmond, Mortlake and Chiswick are also nearby along with transport links.

Features

Kew Riverside Development
Spacious Reception Room
Large Double Bedroom
Underground Parking
Near Kew Retail Park
Ground Floor

Melliss Avenue, Kew, TW9



Total area (approx.): 54.7 sq. m (588.7 sq. ft)