

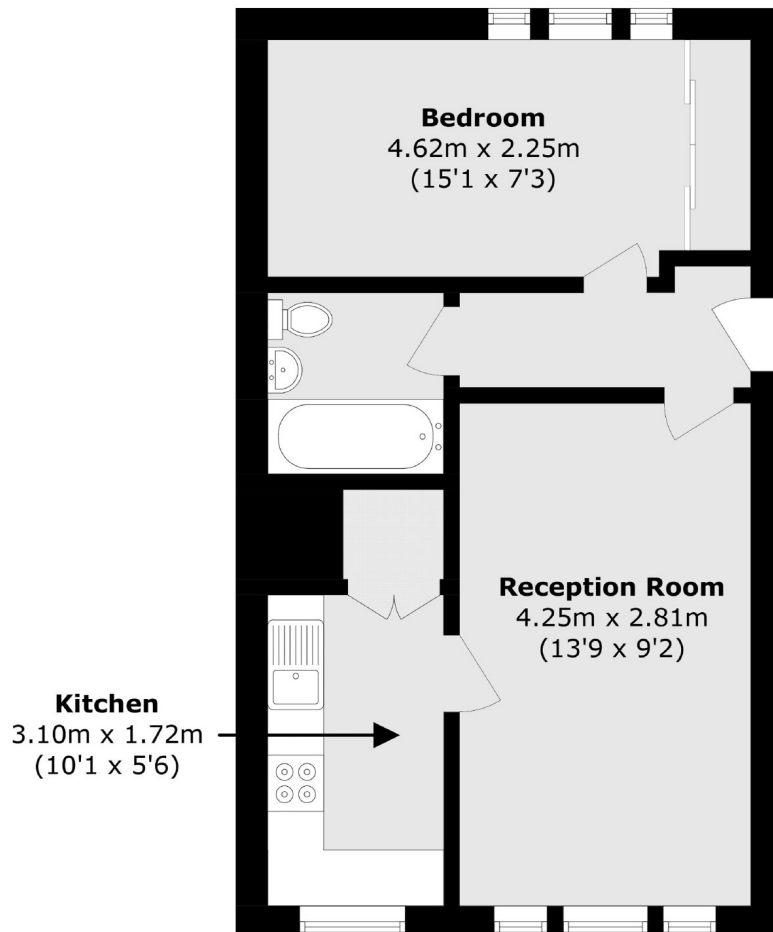


Beardsley Way, W3

£250,000

A purpose-built one bedroom apartment on the borders of Chiswick. This first floor flat is in excellent condition throughout, has allocated off-street parking and is offered with no onward chain.

Beardsley Way is located between Acton Park and Southfield Recreation Ground and close to Acton Central (overground) station and the shops and amenities of Churchfield Road.



Total area (approx.): 37.6 sq. m (404.7 sq. ft)

Robertson Smith & Kempson Acton Sales
137 High Street, Acton,
London, W3 6LY
020 8896 3996
actonsales@robertsonsmithandkempson.co.uk

Energy Rating: C. We aim to make our particulars both accurate and reliable. However they are not guaranteed; nor do they form part of an offer or contract. If you require clarification on any points then please contact us, especially if you're traveling some distance to view. Please note that appliances and heating systems have not been tested and therefore no warranties can be given as to their good working order.