

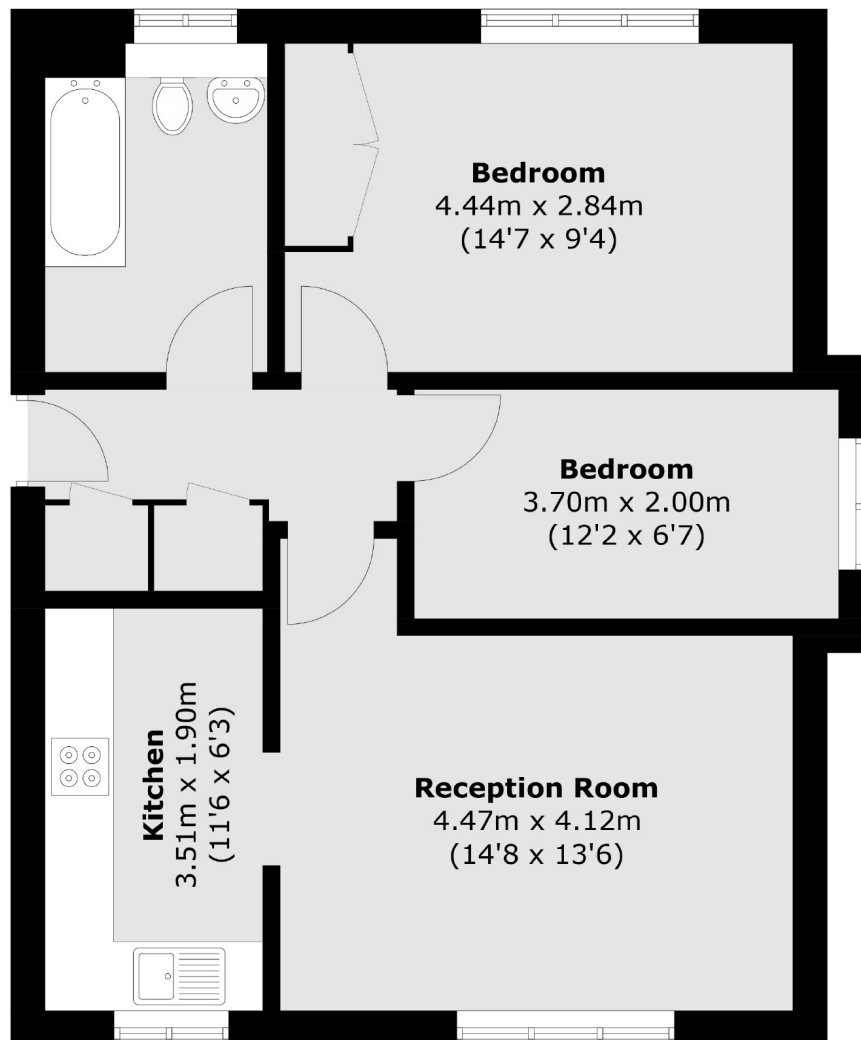


Bromyard Avenue, W3

£399,950

A modern first floor two bedroom apartment in this popular development close to Acton Park. The flat offers in excess of 600 sq.ft of accommodation, has allocated off-street parking and access to communal gardens.

Bromyard Avenue is located within half a mile of both East Acton (Central line) and Acton Central (overground) stations as well as the shops and amenities of Churchfield Road and The Vale.



Total area (approx.): 55.9 sq. m (601.7 sq. ft)

Robertson Smith & Kempson Acton Sales
137 High Street, Acton,
London, W3 6LY
020 8896 3996
actonsales@robertsonsmithandkempson.co.uk

Energy Rating: C. We aim to make our particulars both accurate and reliable. However they are not guaranteed; nor do they form part of an offer or contract. If you require clarification on any points then please contact us, especially if you're traveling some distance to view. Please note that appliances and heating systems have not been tested and therefore no warranties can be given as to their good working order.