

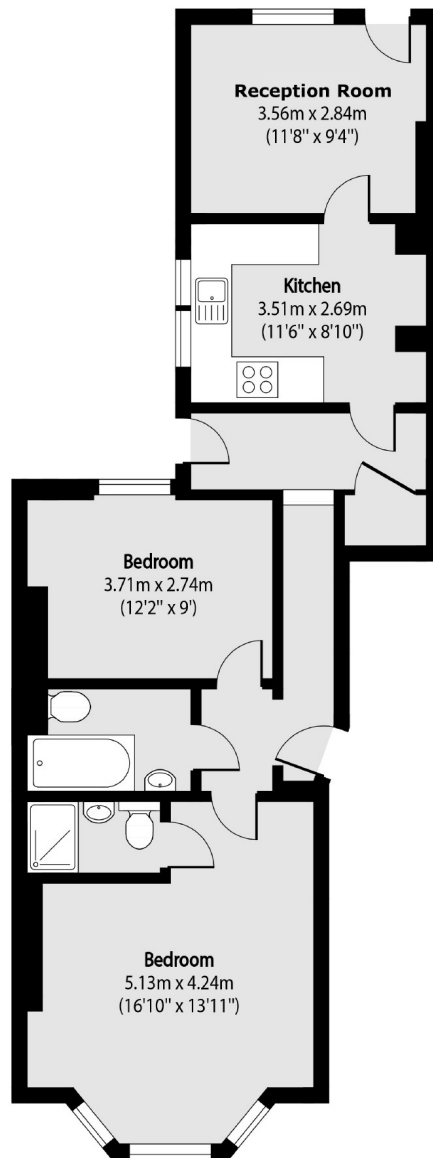


Alfred Road, W3

£450,000

A ground floor two bedroom period conversion apartment located just off Churchfield Road. The property offers in excess of 700 sq.ft of commendation, has direct access onto the communal gardens and is offered with no onward chain.

Alfred Road is within 500 metres of Acton Central station and Acton Park and is just over half a mile to Acton Main Line for the Elizabeth Line.



Total area (approx): 66.23 sq m (713 sq. ft)

Robertson Smith & Kempson Acton Sales
137 High Street, Acton,
London, W3 6LY
020 8896 3996
actonsales@robertsonsmithandkempson.co.uk

Energy Rating: C. We aim to make our particulars both accurate and reliable. However they are not guaranteed; nor do they form part of an offer or contract. If you require clarification on any points then please contact us, especially if you're traveling some distance to view. Please note that appliances and heating systems have not been tested and therefore no warranties can be given as to their good working order.