



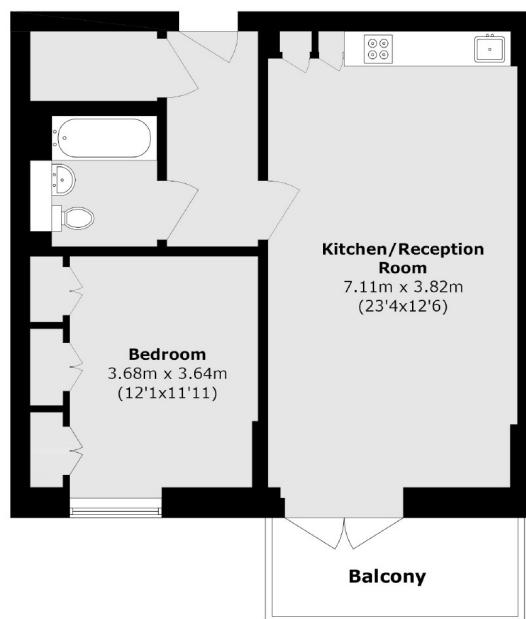
Lakeside Drive, NW10

£280,000

A modern fifth floor one bedroom apartment located in the popular Lakeside Drive development. The property has a private balcony, access to well maintained communal gardens and a residents gym within the building.

Lakeside Drive is less than half a mile from both Hanger Lane (Central line) and Park Royal (Piccadilly line) stations providing excellent access into town.

- One Bedroom • Fifth Floor • Balcony •
- Residents Gym • Communal Gardens • Long Lease •



Total area (approx.): 52.7 sq. m (567.3 sq. ft)

Balcony area (approx.): 5.6 sq. m (60.3 sq. ft)

Robertson Smith & Kempson Hanwell Sales
69 Greenford Avenue,
London, W7 1LL
020 8566 2339
hanwellsales@robertsonsmithandkempson.co.uk

Energy Rating: . We aim to make our particulars both accurate and reliable. However they are not guaranteed; nor do they form part of an offer or contract. If you require clarification on any points then please contact us, especially if you're traveling some distance to view. Please note that appliances and heating systems have not been tested and therefore no warranties can be given as to their good working order.