

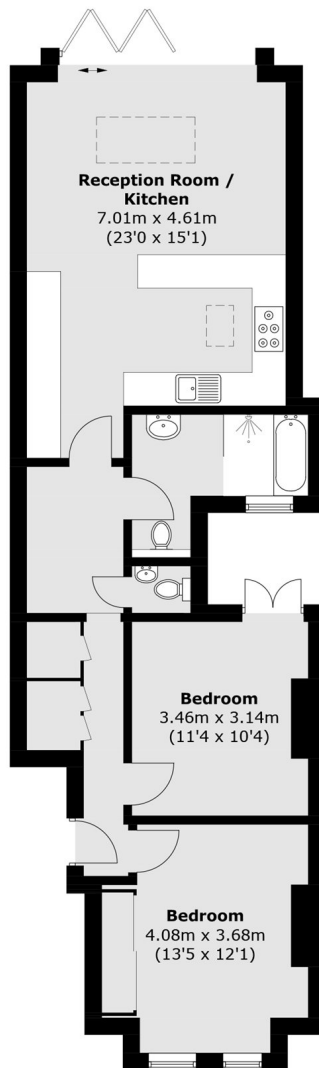


## **Berrymead Gardens, W3**

**£575,000**

A beautifully presented two-bedroom period conversion garden flat, ideally located in the heart of Acton. Finished to a high standard throughout, the property features a stunning open-plan kitchen/living area with bi-fold doors opening onto a landscaped private garden.

Conveniently located just off the High Street and within half a mile of Acton Town, Acton Central, and South Acton stations.



## Ground Floor

Total area (approx.): 73.7 sq. m (793.3 sq. ft)

Robertson Smith & Kempson Hanwell Sales  
69 Greenford Avenue,  
London, W7 1LL  
020 8566 2339  
[hanwellsales@robertsonsmithandkempson.co.uk](mailto:hanwellsales@robertsonsmithandkempson.co.uk)

Energy Rating: C. We aim to make our particulars both accurate and reliable. However they are not guaranteed; nor do they form part of an offer or contract. If you require clarification on any points then please contact us, especially if you're traveling some distance to view. Please note that appliances and heating systems have not been tested and therefore no warranties can be given as to their good working order.