



Somerset Square, W14

£4,700,000

A recently refurbished four-bedroom, three-bathroom home with off-street parking and garage. This immaculate property features large new sash windows, underfloor heating, and air conditioning throughout.



This modern home consists of an extended kitchen which is air-conditioned and features underfloor heating, integrated appliances, remote-controlled blinds for the skylight, and patio doors opening to a well-maintained garden with a patio area.

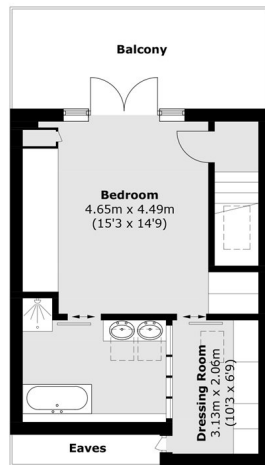
The oak-floored lounge has floor-to-ceiling sash windows, air conditioning, and a Sonos sound system ideal for relaxing or entertaining. A dedicated study area also provides a comfortable space for working from home.

There are four bedrooms and the principal suite boasts French doors to a west-facing terrace, a walk-in wardrobe, and a sleek ensuite.

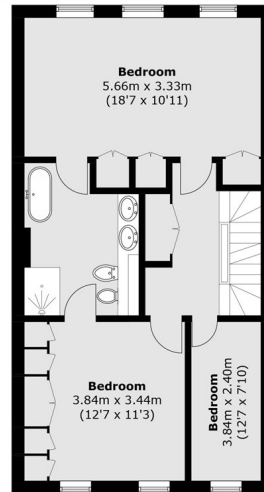
Somerset Square is located just off Addison Road, benefiting from the excellent shopping and transport links of Holland Park Avenue and Kensington High Street. The green open spaces of Holland Park are also close by.

- Four Bedrooms • Three Bathrooms • Terraced •
 - Garage • Patio • Off Street Parking •
-

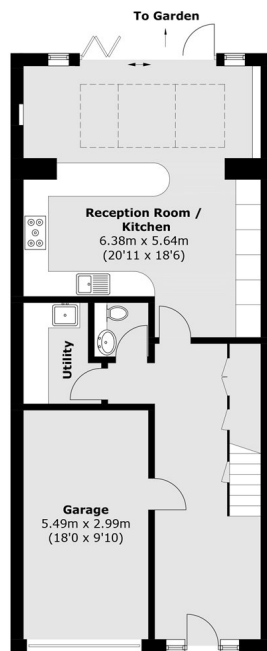




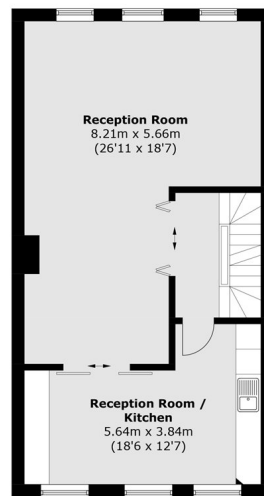
Third / Top Floor



Second Floor



Ground Floor



First Floor

Total area (approx.): 246.7 sq. m (2,673.5 sq. ft)
Balcony area (approx.): 14.7 sq. m (158.2 sq. ft)
(Including Garage / Excluding Eaves)

Robertson Smith & Kempson Acton Sales

137 High Street, Acton,
London, W3 6LY

020 8896 3996

actonsales@robertsonsmithandkempson.co.uk

Energy Rating: C. We aim to make our particulars both accurate and reliable. However they are not guaranteed; nor do they form part of an offer or contract. If you require clarification on any points then please contact us, especially if you're traveling some distance to view. Please note that appliances and heating systems have not been tested and therefore no warranties can be given as to their good working order.