

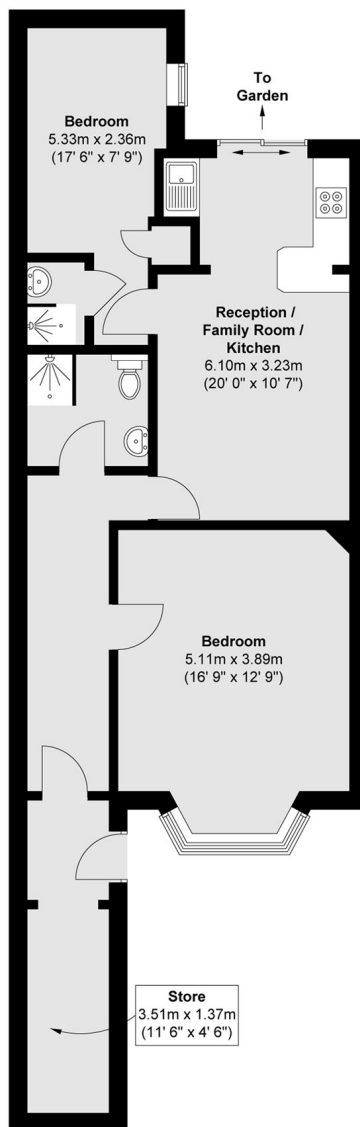


## Alfred Road, W3

£475,000

A two bedroom garden flat located in the heart of Acton. The property offers almost 800 sq.ft of accommodation, has a private garden, a share of the freehold and is offered with no onward chain.

Alfred Road is within 500 metres of Acton Central station, Acton Park and the shops and amenities of Churchfield Road and is just over half a mile to Acton Main Line for the Elizabeth Line.



Total area (approx.) : 71.7 sq. m (772 sq. ft)

Robertson Smith & Kempson Acton Sales  
137 High Street, Acton,  
London, W3 6LY  
020 8896 3996  
[actonsales@robertsonsmithandkempson.co.uk](mailto:actonsales@robertsonsmithandkempson.co.uk)

Energy Rating: D. We aim to make our particulars both accurate and reliable. However they are not guaranteed; nor do they form part of an offer or contract. If you require clarification on any points then please contact us, especially if you're traveling some distance to view. Please note that appliances and heating systems have not been tested and therefore no warranties can be given as to their good working order.