

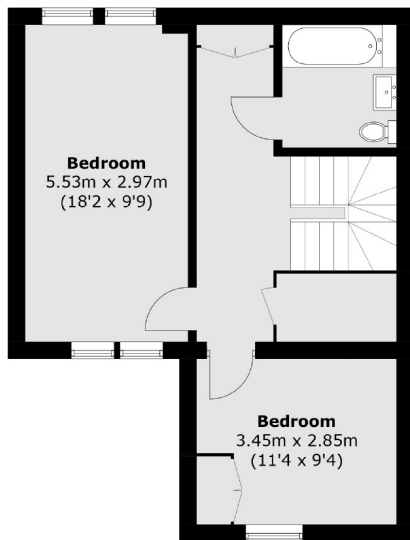


Davenant Way, W3

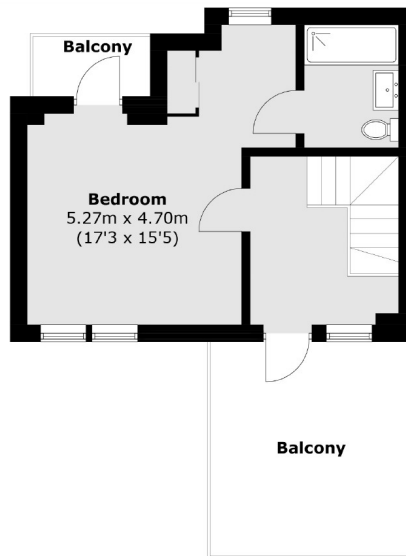
£830 pw (£3600.00 pcm)

This impressive townhouse consists of a spacious open plan kitchen/ living room with under floor heating and a door out to the back garden and a downstairs WC. To the first floor are two double bedrooms and a modern family bathroom.

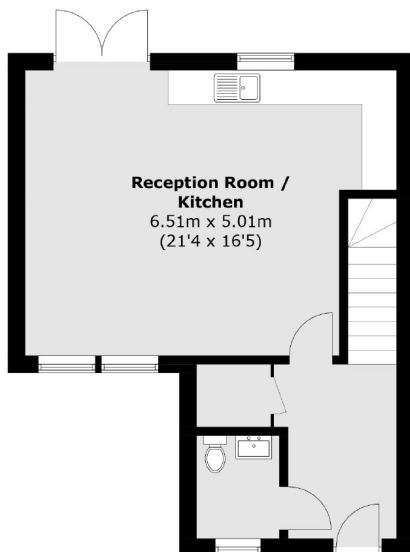
On the top floor is the principal bedroom with en suite bathroom and large terrace.



First Floor



Second Floor



Ground Floor

Total area (approx.): 121.5 sq. m (1307.6 sq. ft)
Balcony Area : 15.5 sq. m (166.8 sq. ft)

Robertson Smith & Kempson Acton Lettings
137 High Street,
Acton, London, W3
020 8896 3967
actonlettings@robertsonsmithandkempson.co.uk

Energy Rating: B. We aim to make our particulars both accurate and reliable. However they are not guaranteed; nor do they form part of an offer or contract. If you require clarification on any points then please contact us, especially if you're traveling some distance to view. Please note that appliances and heating systems have not been tested and therefore no warranties can be given as to their good working order.