

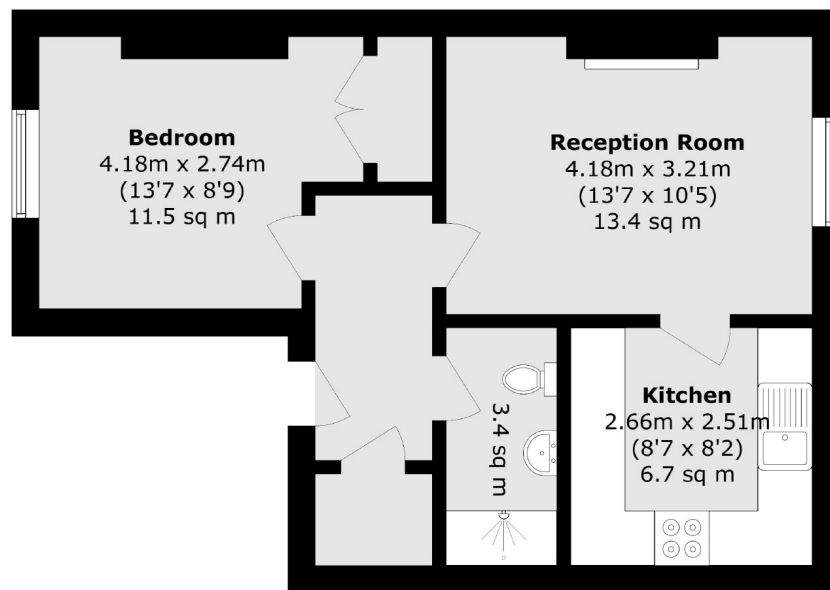


Kent Gardens, W13

£346 pw (£1,500 pcm)

This second floor flat has a double bedroom, a bright lounge, a contemporary kitchen and a bathroom with walk in shower. The property also has an entry phone system, built in wardrobes and double glazing.

Kent Gardens is close to Pitshanger Village and one mile from Ealing Broadway station, various shops and amenities.



Total area (approx.): 41.0 sq. m (441.3 sq. ft)

Robertson Smith & Kempson Ealing Lettings
1 The Broadway,
London, W5 2NT
020 8840 7885
ealinglettings@robertsonsmithandkempson.co.uk

Energy Rating: C. We aim to make our particulars both accurate and reliable. However they are not guaranteed; nor do they form part of an offer or contract. If you require clarification on any points then please contact us, especially if you're traveling some distance to view. Please note that appliances and heating systems have not been tested and therefore no warranties can be given as to their good working order.