

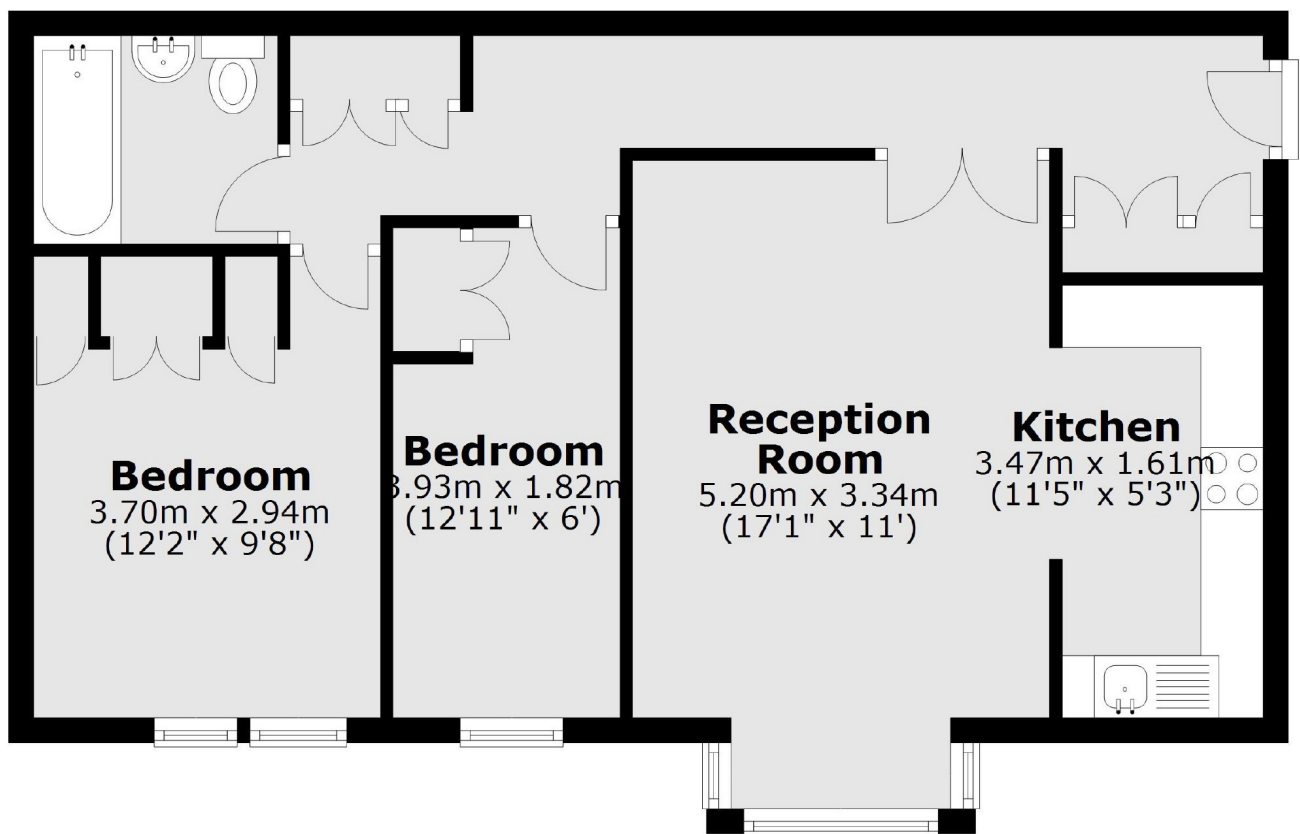


Harriers Close, W5

£438 pw (£1,900 pcm)

This two double bedroom top floor flat has ample storage throughout, featuring separate reception room, fitted kitchen and bathroom.

The property is ideally located near Ealing Broadways station (Central, District and Elizabeth Lines and overground), shopping centre, restaurants and bars.



Total area: approx. 55.2 sq. metres (593.7 sq. feet)

Robertson Smith & Kempson Ealing Lettings
1 The Broadway, London, W5
2NT
020 8840 7885
ealinglettings@robertsonsmithandkempson.co.uk

Energy Rating: D. We aim to make our particulars both accurate and reliable. However they are not guaranteed; nor do they form part of an offer or contract. If you require clarification on any points then please contact us, especially if you're traveling some distance to view. Please note that appliances and heating systems have not been tested and therefore no warranties can be given as to their good working order.