



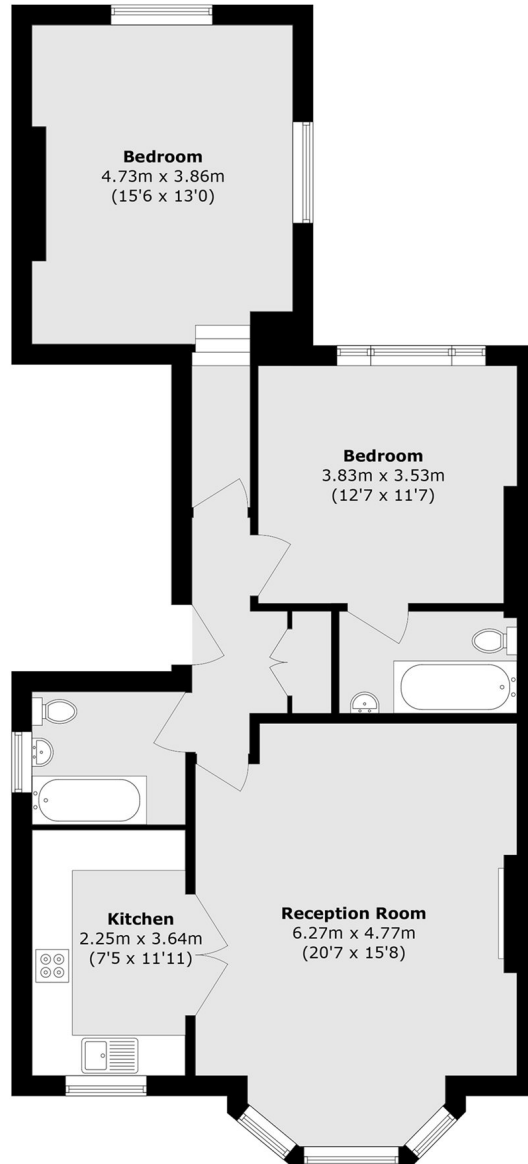
Grange Park, W5

£576 pw (£2,500 pcm)

This well-maintained first floor flat features two double bedrooms, two bathrooms (including an en suite), a bright and spacious living area and a modern separate kitchen.

Grange Park is close to the open spaces of Ealing Common and Ealing Broadway with its shops and transport links.

- Two Bedrooms • Two Bathrooms • Ealing Broadway •



Total area (approx.): 85.1 sq. m (916.0 sq. ft)

Robertson Smith & Kempson Ealing Lettings
1 The Broadway, London, W5
2NT
020 8840 7885
ealinglettings@robertsonsmithandkempson.co.uk

Energy Rating: D. We aim to make our particulars both accurate and reliable. However they are not guaranteed; nor do they form part of an offer or contract. If you require clarification on any points then please contact us, especially if you're traveling some distance to view. Please note that appliances and heating systems have not been tested and therefore no warranties can be given as to their good working order.