



Hardwick Green, W13

£825,000

This stunning five bedroom home is finished to an exceptional standard throughout and is offered to the market chain free. Thoughtfully designed and beautifully presented, it combines modern elegance with practical living, making it a perfect choice for professionals, couples, or families.

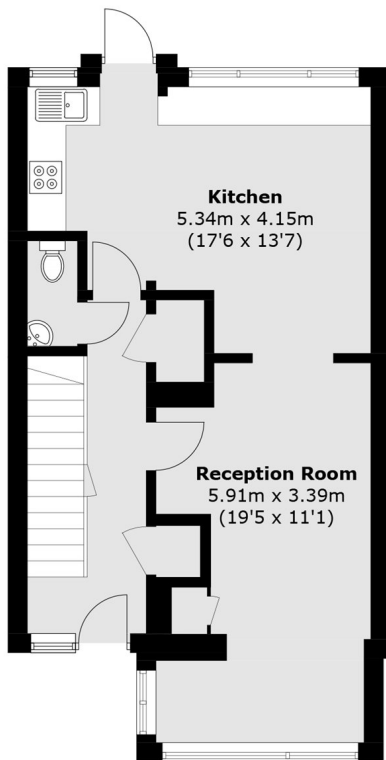


Immaculately presented throughout, the ground floor comprises a spacious reception room, WC, and a stylish open plan kitchen. The first floor boasts two generous double bedrooms and a modern family bathroom, while the top floor comprises an additional two bedrooms and a bathroom.

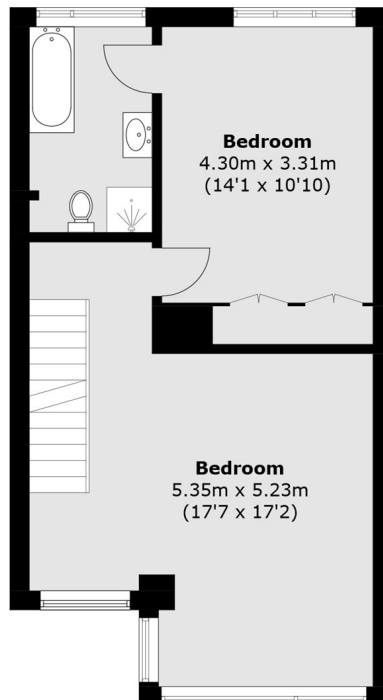
Located conveniently for Pitshanger Village and Ealing Broadway for Crossrail, Central and District line. Also close to a range of excellent schooling options.

- No Onward Chain • Off Street Parking • Two Bathrooms •
- Recently Refurbished • Well Regarded Schools • Great Transport Links •

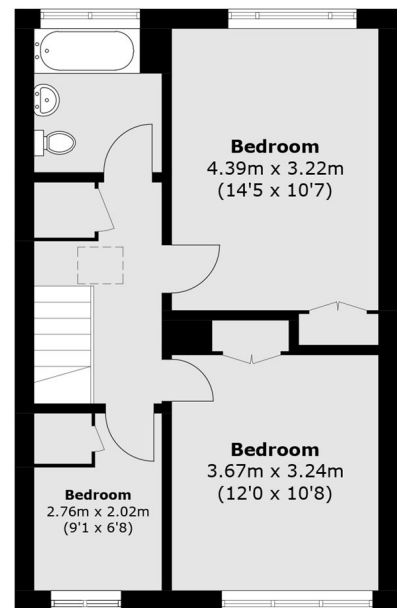




Ground Floor



First Floor



Second Floor

Total area (approx.): 150.1 sq. m (1,615.6 sq. ft)

Robertson Smith & Kempson Ealing Sales
1 The Broadway, London,
W5 2NT
020 8840 7677
ealingsales@robertsonsmithandkempson.co.uk

Energy Rating: . We aim to make our particulars both accurate and reliable. However they are not guaranteed; nor do they form part of an offer or contract. If you require clarification on any points then please contact us, especially if you're traveling some distance to view. Please note that appliances and heating systems have not been tested and therefore no warranties can be given as to their good working order.