

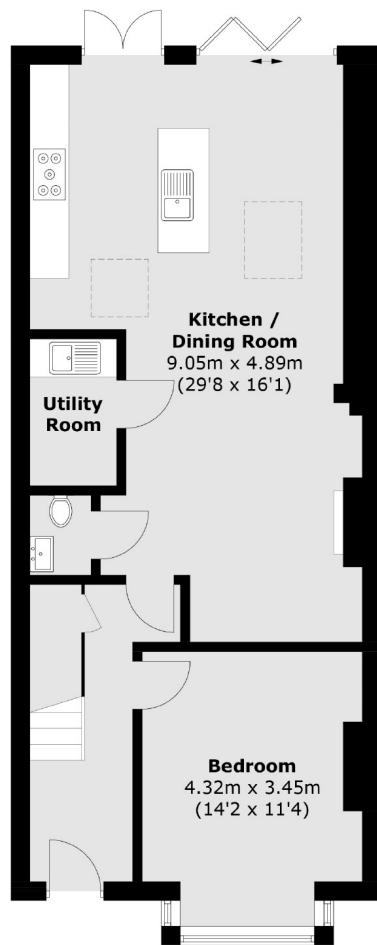


Drayton Gardens, W13

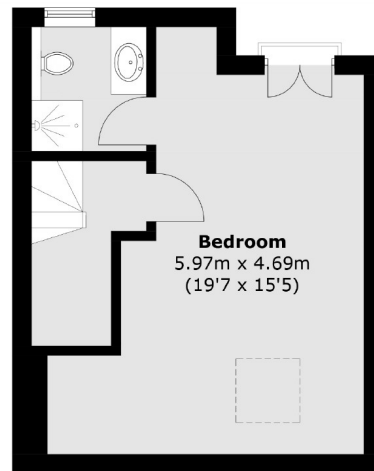
£1,015 pw (£4,400 pcm)

A spacious four bedroom home arranged over three floors, featuring a modern fitted kitchen, a large dining area, a separate reception room, two bathrooms and a landscaped garden. The property is finished to a high standard and is perfect for a family.

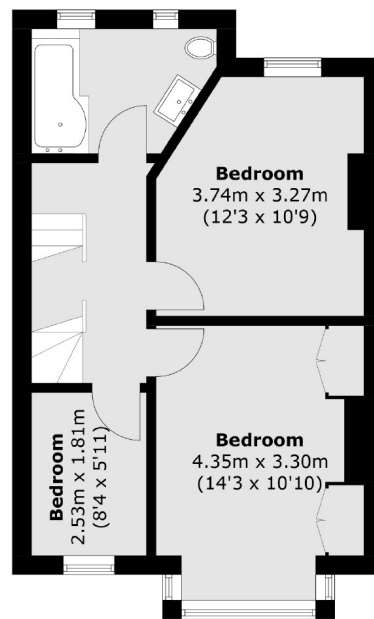
Drayton Gardens is 0.2 miles from West Ealing (Elizabeth line) station and various shops and amenities.



Ground Floor



Second Floor



First Floor

Total area (approx.): 142.1 sq. m (1,529.4 sq. ft)

Robertson Smith & Kempson Ealing Lettings
1 The Broadway,
London, W5 2NT
020 8840 7885
ealinglettings@robertsonsmithandkempson.co.uk

Energy Rating: C. We aim to make our particulars both accurate and reliable. However they are not guaranteed; nor do they form part of an offer or contract. If you require clarification on any points then please contact us, especially if you're traveling some distance to view. Please note that appliances and heating systems have not been tested and therefore no warranties can be given as to their good working order.