

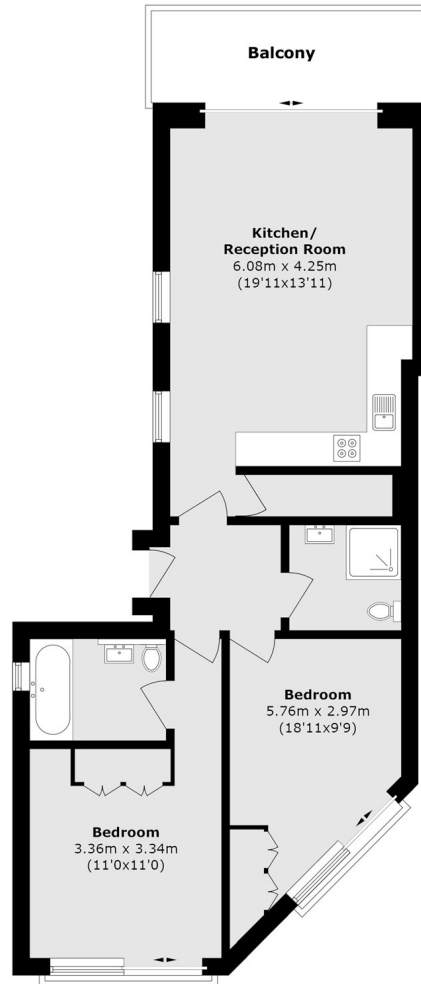


## **Uxbridge Road, W5**

**£692 pw (£3,000 pcm)**

This New build property offers two double bedrooms and two bathrooms which one is an en suite. It features a large open plan living area, plenty of storage space, gated parking and a balcony.

Uxbridge Road is moments from the open spaces of Ealing Common, Ealing Common (District and Piccadilly lines) station, Ealing Broadway and variety of shops and amenities.



Total area (approx.): 69.5 sq. m (748.0 sq. ft)  
(Excluding Balcony)  
Balcony area (approx.): 7.69 sq. m (82.7 sq. ft)

Robertson Smith & Kempson Ealing Lettings  
1 The Broadway,  
London, W5 2NT  
020 8840 7885  
[ealinglettings@robertsonsmithandkempson.co.uk](mailto:ealinglettings@robertsonsmithandkempson.co.uk)

Energy Rating: . We aim to make our particulars both accurate and reliable. However they are not guaranteed; nor do they form part of an offer or contract. If you require clarification on any points then please contact us, especially if you're traveling some distance to view. Please note that appliances and heating systems have not been tested and therefore no warranties can be given as to their good working order.