

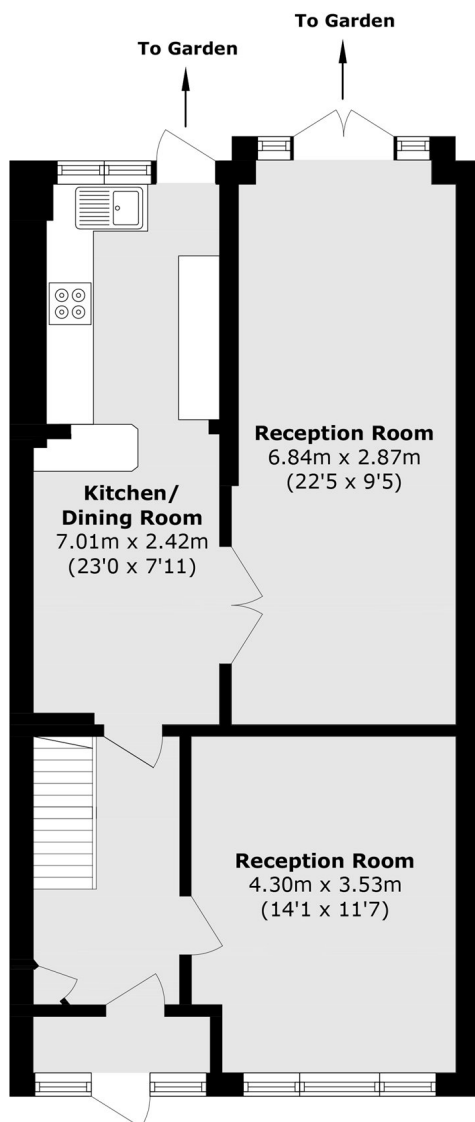


Avon Road, UB6

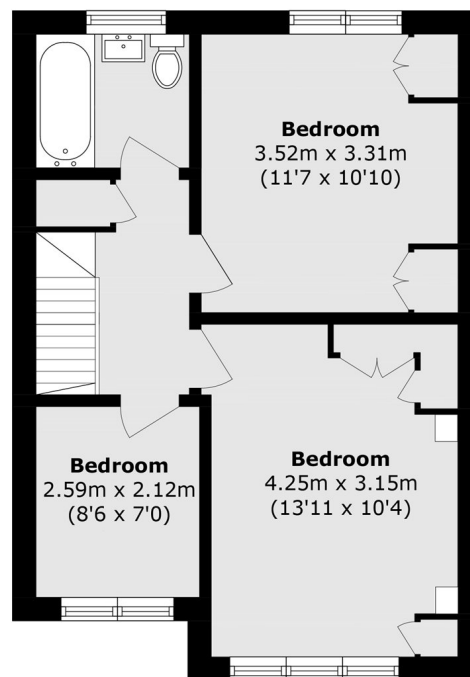
£565 pw (£2,450 pcm)

An attractive three bedroom terraced house ideal for a family. The property benefits from a two separate reception room, modern kitchen, double glazing windows, gas central heating and a large garden.

Avon Road is under half a mile from Greenford (Central line) station for access to Central London and under a quarter of a mile away from A40/A406 for drivers.



Ground Floor



First Floor

Total area (approx.): 103.4 sq. m (1112.9 sq. ft)

Robertson Smith & Kempson Ealing Lettings
1 The Broadway,
London, W5 2NT
020 8840 7885
ealinglettings@robertsonsmithandkempson.co.uk

Energy Rating: C. We aim to make our particulars both accurate and reliable. However they are not guaranteed; nor do they form part of an offer or contract. If you require clarification on any points then please contact us, especially if you're traveling some distance to view. Please note that appliances and heating systems have not been tested and therefore no warranties can be given as to their good working order.