



Woodville Road, W5

£650,000

Set in this ideal and most desirable location, a spacious two double bedroom, two bathroom top floor flat filled with natural light throughout and presented in excellent condition by the current owners. Additional benefits include a long lease and an allocated parking space.

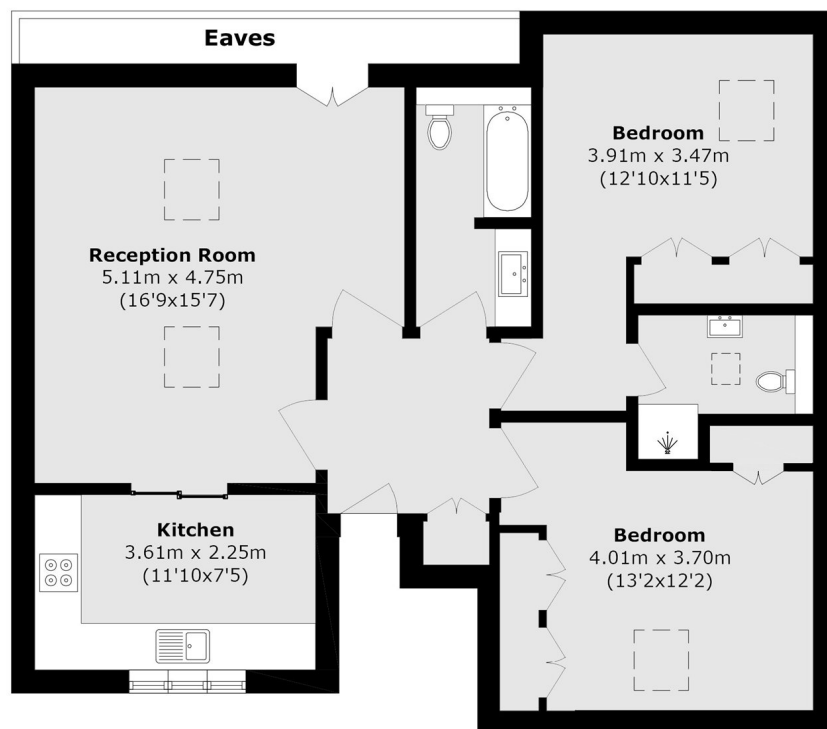


Offering over 800 sq ft, is this very pleasant flat with high ceilings, ready for the new buyer to move in and enjoy immediately. The accommodation comprises two double bedrooms, shower room, family bathroom and open plan living room/kitchen. The property further benefits from an abundance of storage throughout the flat including in the eaves.

Ideally located for the Elizabeth line at Ealing Broadway station which offers excellent access into central London and beyond. A range of shops, restaurants and cafes are just a short stroll away.

- Two Double Bedrooms • Two Bathrooms • Allocated Parking •
 - Long Lease • Elizabeth Line • Excellent Location •
-





Total area (approx.): 75.1 sq. m (808.4 sq. ft)

(Excluding Eaves)

Robertson Smith & Kempson Ealing Sales
1 The Broadway, London,
W5 2NT
020 8840 7677
ealingsales@robertsonsmithandkempson.co.uk

Energy Rating: E. We aim to make our particulars both accurate and reliable. However they are not guaranteed; nor do they form part of an offer or contract. If you require clarification on any points then please contact us, especially if you're traveling some distance to view. Please note that appliances and heating systems have not been tested and therefore no warranties can be given as to their good working order.