

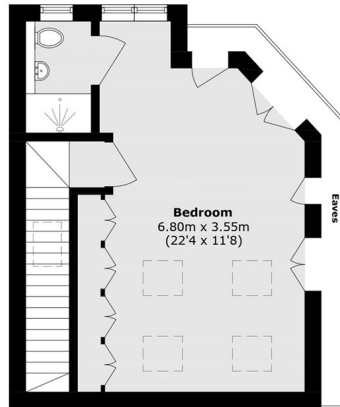


Lilac Gardens, W5

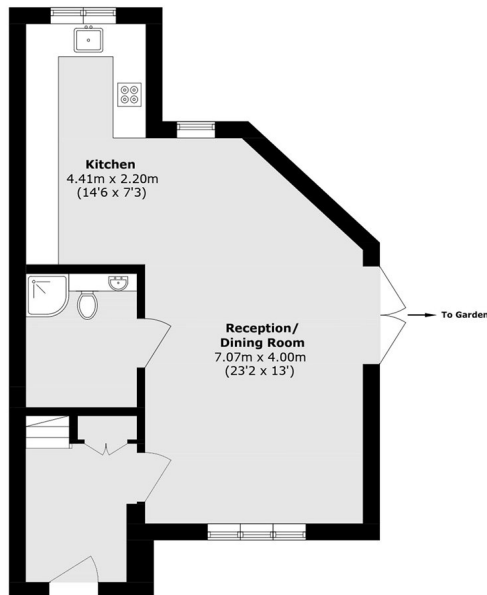
£853 pw (£3,700 pcm)

This stunning newly built detached four bedroom, three bathroom home offers modern living across three beautifully designed floors. It has fantastic interiors with an open plan kitchen/reception room, driveway and private patio garden.

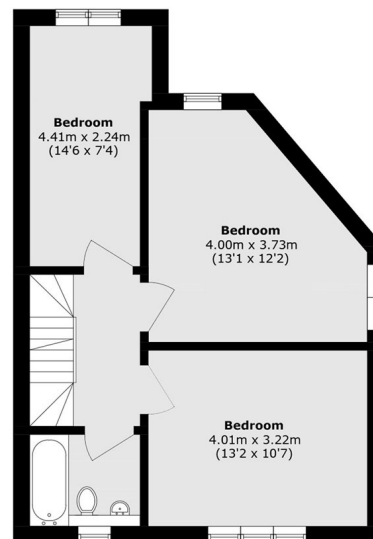
Lilac gardens offers local amenities, with Gunnersbury Park close by and a variety of shops and restaurants along South Ealing Road and station (Piccadilly line).



Second Floor



Ground Floor



First Floor

Total area (approx.): 127.7 sq. m (1374.5 sq. ft)
(Excluding Eaves)

Robertson Smith & Kempson Ealing Lettings
1 The Broadway,
London, W5 2NT
020 8840 7885
ealinglettings@robertsonsmithandkempson.co.uk

Energy Rating: B. We aim to make our particulars both accurate and reliable. However they are not guaranteed; nor do they form part of an offer or contract. If you require clarification on any points then please contact us, especially if you're traveling some distance to view. Please note that appliances and heating systems have not been tested and therefore no warranties can be given as to their good working order.