



## Hathaway Gardens, W13

£490,000

Ideally situated in this quieter location a very well presented two double bedroom ground floor maisonette flat with direct access to a secluded garden.



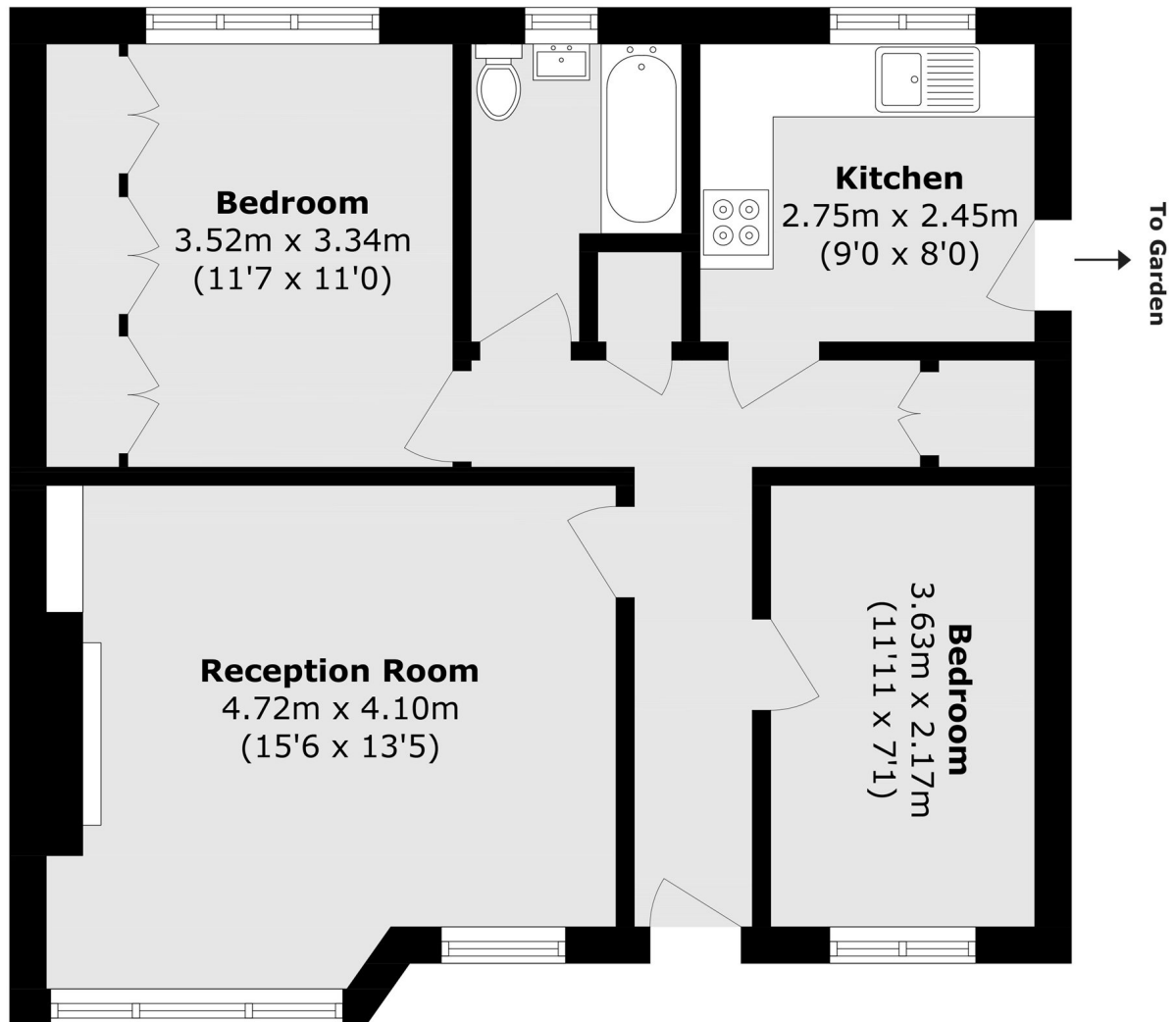
Entering through your own door, this delightful flat comprises a large front reception filled with natural light aided by the high ceilings. Two double bedrooms, plenty of storage and a kitchen complete the flat. You can enter the secluded sun trapped garden from the kitchen or with very useful side access (ideal for bins/bikes etc).

Ideally located for the Elizabeth Line at West Ealing station and bus routes on Drayton Bridge road. Local parks to enjoy include Drayton Green and Pitshanger park.

- Two Double Bedrooms • Ground Floor • Long Lease •
  - Secluded Garden • Elizabeth Line (West Ealing) • Maisonette •
-







Total area (approx.): 60.3 sq. m (649.0 sq. ft)

Robertson Smith & Kempson Ealing Sales  
1 The Broadway, London,  
W5 2NT  
020 8840 7677  
[ealingsales@robertsonsmithandkempson.co.uk](mailto:ealingsales@robertsonsmithandkempson.co.uk)

Energy Rating: C. We aim to make our particulars both accurate and reliable. However they are not guaranteed; nor do they form part of an offer or contract. If you require clarification on any points then please contact us, especially if you're traveling some distance to view. Please note that appliances and heating systems have not been tested and therefore no warranties can be given as to their good working order.