

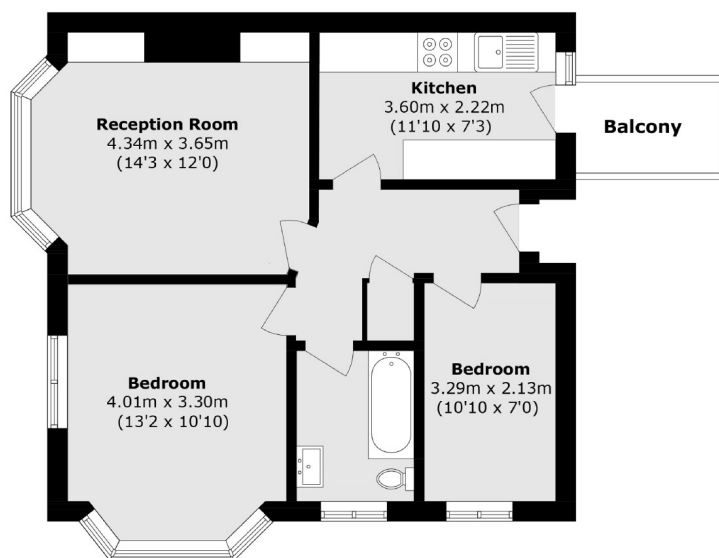


Church Road, W7

£375,000

This light and airy two bedroom top floor apartment is situated in a sought after location, offering views of the park. The property features two double bedrooms, a separate lounge, and a kitchen with access to a private balcony.

Glebe Court is situated within walking distance of Hanwell (Elizabeth line) station, varied and frequent bus links and local amenities on Greenford Avenue and well regarded schools.



Total area (approx.): 53.6 sq. m (576.0 sq. ft)

Balcony area (approx.): 3.0 sq. m (32.3 sq. ft)

Robertson Smith & Kempson Hanwell Sales
69 Greenford Avenue,
London, W7 1LL
020 8566 2339
hanwellsales@robertsonsmithandkempson.co.uk

Energy Rating: C. We aim to make our particulars both accurate and reliable. However they are not guaranteed; nor do they form part of an offer or contract. If you require clarification on any points then please contact us, especially if you're traveling some distance to view. Please note that appliances and heating systems have not been tested and therefore no warranties can be given as to their good working order.