

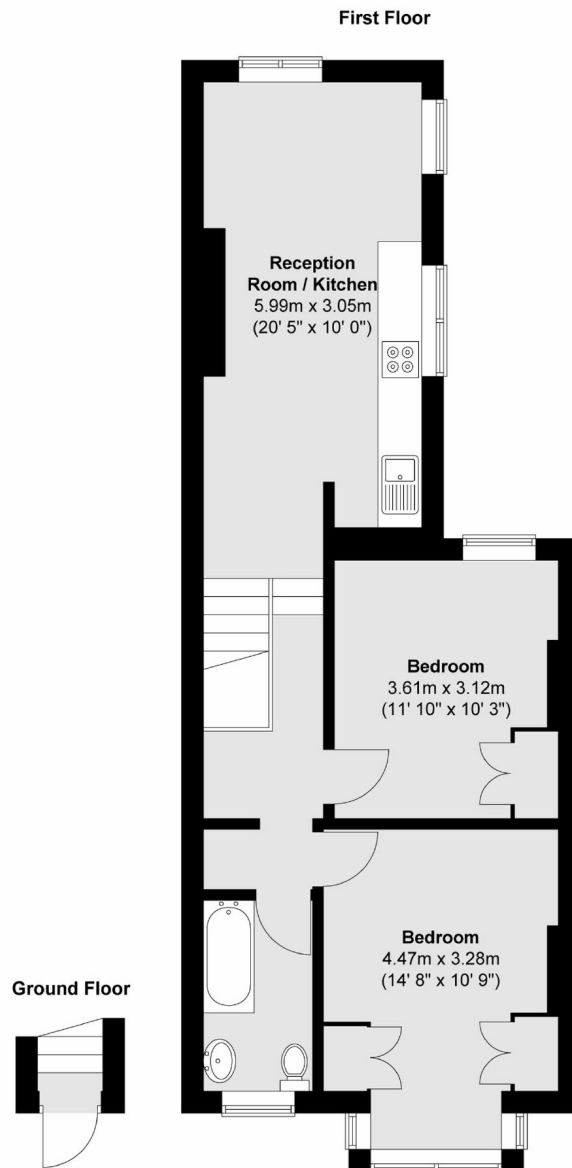


## **Greenford Avenue, W7**

**£330,000**

This share of freehold two bedroom period maisonette is situated on the first floor and offers a open plan kitchen diner. The property has potential to extend into the loft (STPP) and will be sold with a private driveway.

Situated within walking distance of Hanwell station (Elizabeth line), with easy access to varied and frequent bus links, the local amenities on Greenford Avenue and well regarded schools.



Total area (approx.) : 59.6 sq. m (641 sq. ft)

Robertson Smith & Kempson Northfields Sales  
116 Northfield Avenue,  
London, W13 9RT  
020 8566 2340  
[northfieldssales@robertsonsmithandkempson.co.uk](mailto:northfieldssales@robertsonsmithandkempson.co.uk)

Energy Rating: D. We aim to make our particulars both accurate and reliable. However they are not guaranteed; nor do they form part of an offer or contract. If you require clarification on any points then please contact us, especially if you're traveling some distance to view. Please note that appliances and heating systems have not been tested and therefore no warranties can be given as to their good working order.