



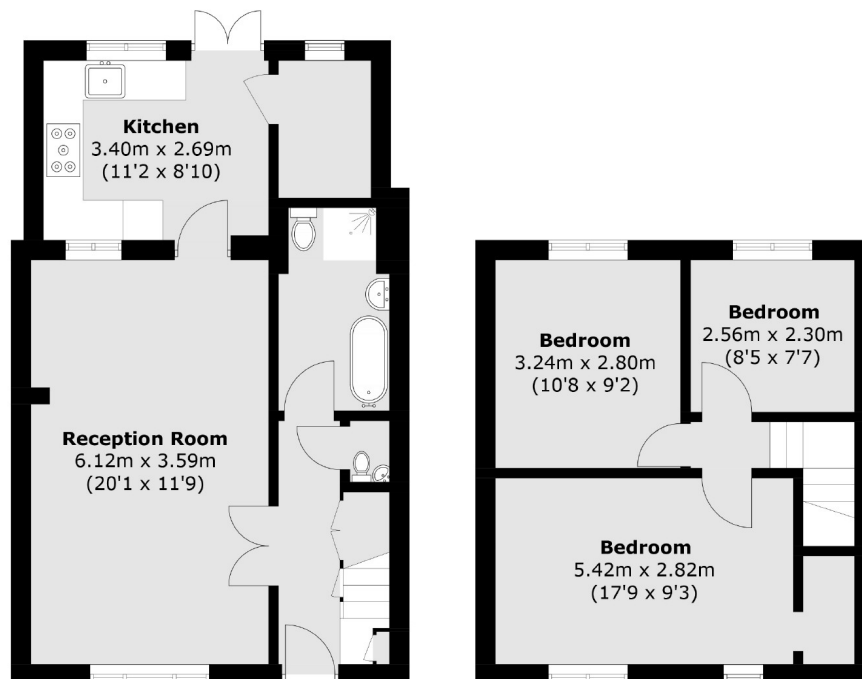
## **Upfield Road, W7**

**£580,000**

A three bedroom house within the Cuckoo conservation area. The property has off-street parking, a rear garden with patio and potential to extend into the loft, subject to the usual consents.

Castlebar Park station is close by as are the many bus routes to Ealing Broadway and Greenford. Hanwell station with it's Elizabeth line route is one mile away.

- Conservation Area • Additional W/C • Off-Street Parking •
- Choice Of Schools • Potential To Extend • Excellent Transport •



**Ground Floor**

**First Floor**

Total area (approx.): 81.9 sq. m (881.6 sq. ft)

Robertson Smith & Kempson Hanwell Sales  
69 Greenford Avenue,  
London, W7 1LL  
020 8566 2339  
[hanwellsales@robertsonsmithandkempson.co.uk](mailto:hanwellsales@robertsonsmithandkempson.co.uk)

Energy Rating: D. We aim to make our particulars both accurate and reliable. However they are not guaranteed; nor do they form part of an offer or contract. If you require clarification on any points then please contact us, especially if you're traveling some distance to view. Please note that appliances and heating systems have not been tested and therefore no warranties can be given as to their good working order.