



**Murray Road, W5**

**£1,350,000**

\*\*\* Offers In Excess Of \*\*\*

We're delighted to present this truly exceptional detached home, an architect designed four-bedroom family home, thoughtfully extended and beautifully refurbished across three spacious floors. This charming property is offered to the market with no onward chain, includes a driveway, and benefits from excellent schools, lovely parks, and superb transport links.



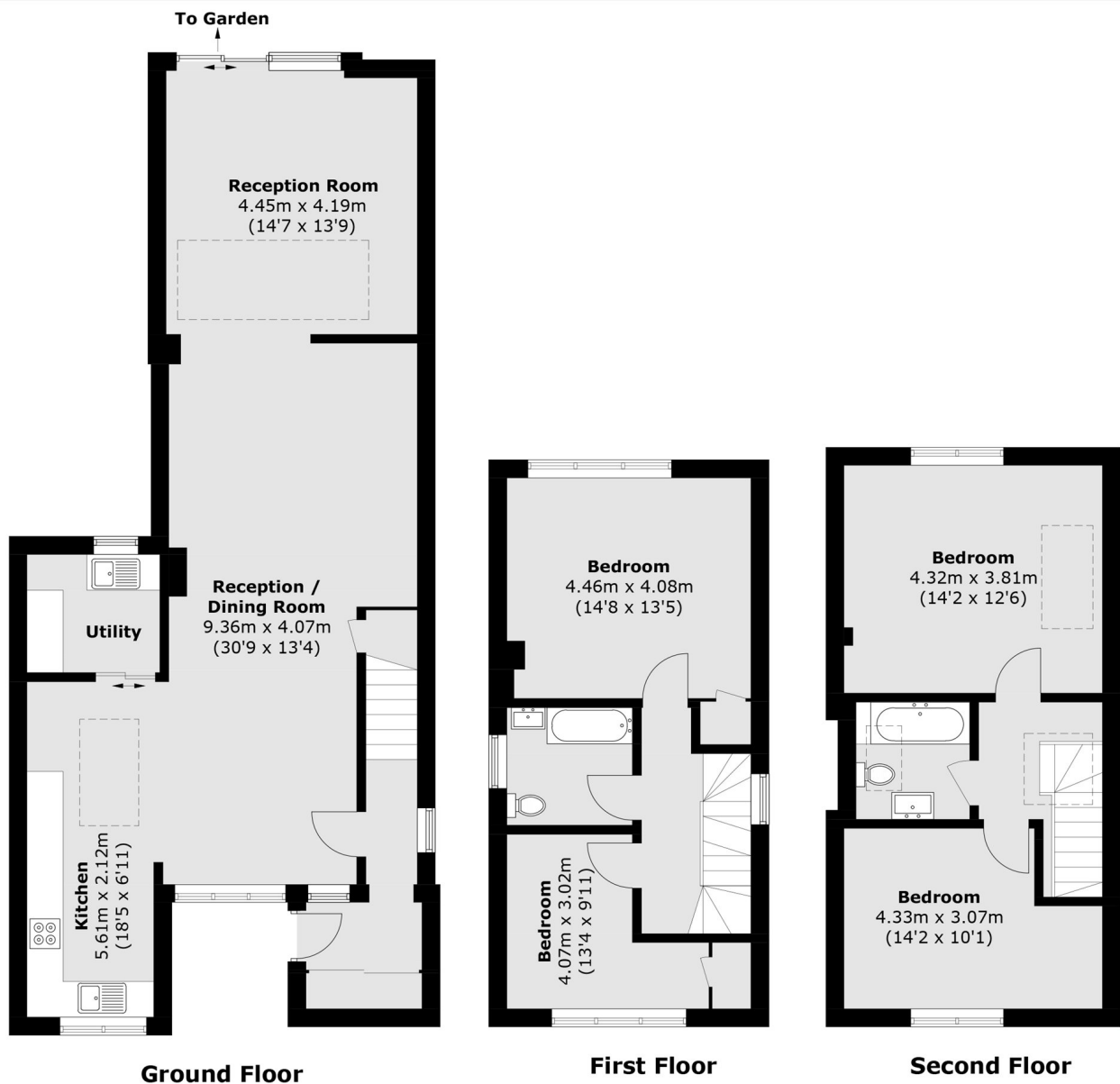
Full of character, this spacious family home welcomes you with a kitchen/diner and an extended double reception room that opens onto a secluded garden, along with an additional separate utility room. The first floor features two double bedrooms and a family bathroom. The third floor was cleverly added to provide two further double bedrooms and an additional bathroom.

South Ealing, Northfields & Brentford stations all within walking distance. Well regarded schools locally including Little Ealing & Ealing Fields. Local parks to enjoy on your doorstep.

- Detached • Secluded Garden • No Onward Chain •
  - Well Regarded Schools • Excellent Transport Links • Off Street Parking •
-







Total area (approx.): 153.7 sq. m (1,654.3 sq. ft)

Robertson Smith & Kempson Northfields Sales  
 116 Northfield Avenue,  
 London, W13 9RT  
 020 8566 2340  
[northfieldssales@robertsonsmithandkempson.co.uk](mailto:northfieldssales@robertsonsmithandkempson.co.uk)

Energy Rating: . We aim to make our particulars both accurate and reliable. However they are not guaranteed; nor do they form part of an offer or contract. If you require clarification on any points then please contact us, especially if you're traveling some distance to view. Please note that appliances and heating systems have not been tested and therefore no warranties can be given as to their good working order.