



Devonshire Road, W5

£950,000

* Offer in Excess of *

This beautiful four bedroom family home is in good condition and offers bright, spacious living throughout. The property boasts a south facing garden, perfect for entertaining. Ideally located with excellent transport links and within catchment of well regarded schools, it is perfectly suited for families and commuters alike. Offered to the market chain free, this is a fantastic opportunity for a smooth and straightforward move.

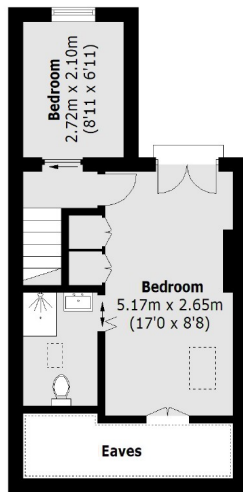


The ground floor comprises a large front reception room, a dining area, and a good-sized kitchen leading to the garden. The first floor offers two double bedrooms and a family bathroom. The loft has been nicely converted, featuring one large bedroom with an en-suite and one single room.

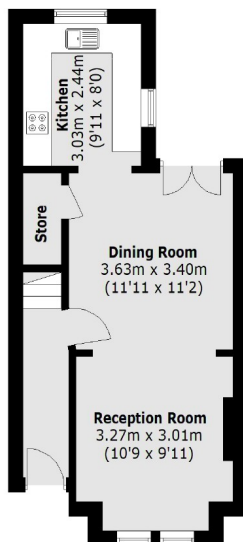
A short walk to Northfields station (Piccadilly), bus routes on Northfields Avenue to Ealing, Chiswick & Brentford. West Ealing station offers the Elizabeth Line to Central London in super quick time. Many local shops & restaurants along Northfields Avenue including Sainsburys. Well regarded schools to choose from including Mount Carmel, Ealing Fields & Ofsted outstanding Gunnersbury.

- Chain Free • Four Bedroom • South Facing Garden •
- Excellent Transport Links • En-suite bathroom • Well Regarded Schools •

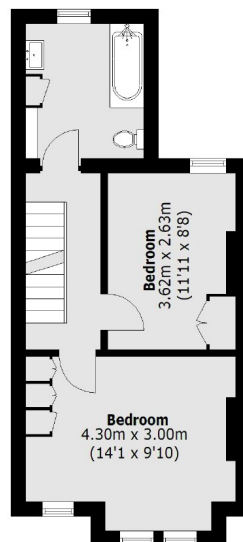




Second Floor



Ground Floor



First Floor

Total area (approx.): 105.1 sq. m (1,131.2 sq. ft)
(Excluding Eaves)

Robertson Smith & Kempson Northfields Sales
116 Northfield Avenue,
London, W13 9RT
020 8566 2340
northfieldssales@robertsonsmithandkempson.co.uk

Energy Rating: D. We aim to make our particulars both accurate and reliable. However they are not guaranteed; nor do they form part of an offer or contract. If you require clarification on any points then please contact us, especially if you're traveling some distance to view. Please note that appliances and heating systems have not been tested and therefore no warranties can be given as to their good working order.