

## Ealing Road, HA0

£550,000

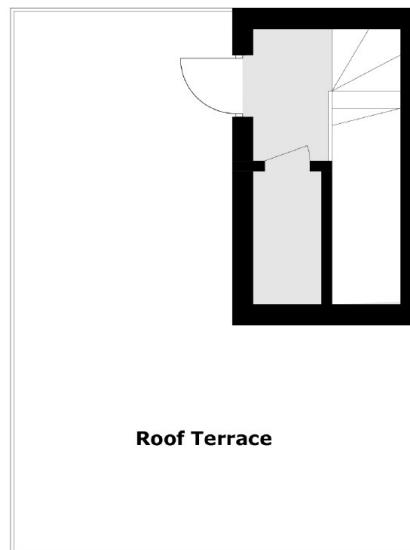
Number 8 Pear Tree Court is a well proportioned apartment spanning over three floors. On the first floor you enter into a large hallway with a WC, to one side you will find the very spacious reception room with two large windows. To the other side you will find a very well laid out separate kitchen with additional utility area. Upstairs you will discover three very good sized bedrooms with bedroom 2 and 3 serviced by the family bathroom. And the principle bedroom with a bright en-suite shower room. Heading up to the final level you will find the roof terrace (with additional storage) At almost 1200 square feet in total this triplex style apartment is not to be missed.

Pear Tree Close is positioned seconds from the Grand Union canal and just a stones throw from Alperton Tube station, serviced by the Piccadilly line. Residents can reach Knightsbridge in just over 30 minutes and Hammersmith in 20 minutes.

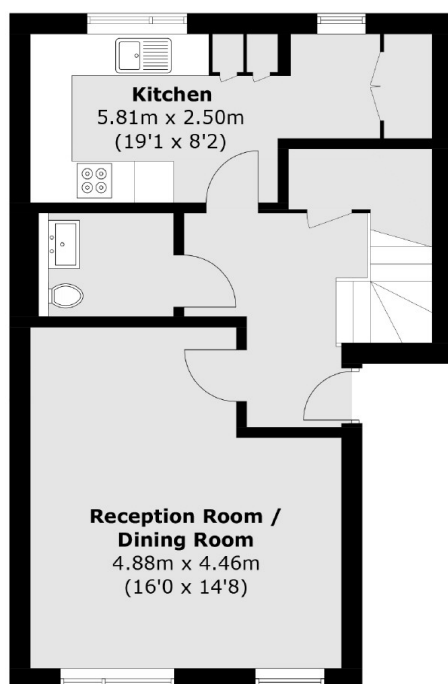
### Features

- Final release of 3 bedroom apartments
- Gated community
- Set by the Grand union Canal
- Sleek modern kitchens with Integrated appliances
- Alperton station minutes away
- Private roof terrace

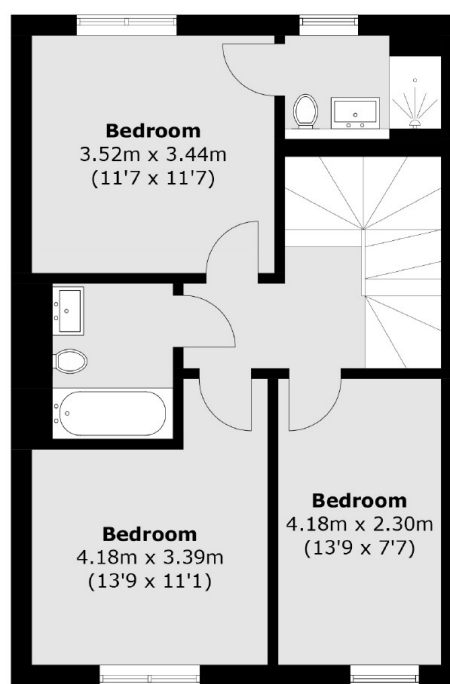
# Ealing Road, Wembley, HA0



**Third Floor**



**First Floor**



**Second Floor**

Total area (approx.): 109.8 sq. m (1,181.8 sq. ft)  
Roof Terrace: 33.4 sq. m (359.5 sq. ft)