

Cranmer Avenue, W13

£465,000

A stylish one bedroom plus study apartment offering modern living in West Ealing in a sought after residential road. Spread across two floors this beautifully designed home offers stylish interiors, and premium finishes.

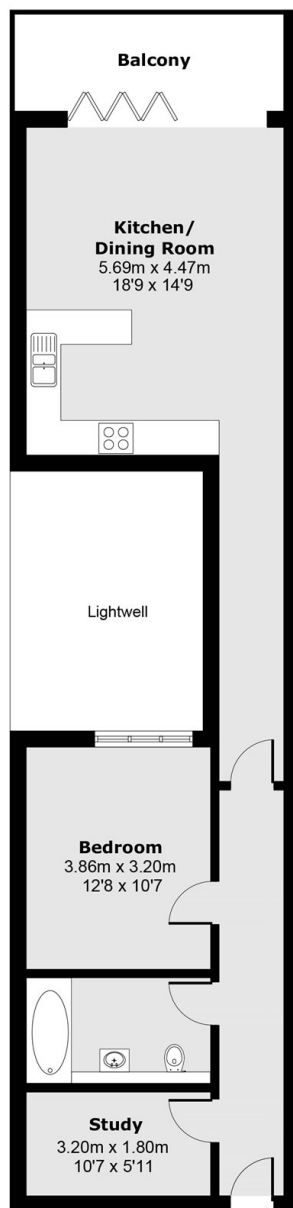
This home offers a well proportioned double bedroom with modern bathroom, upstairs the expansive open plan living, dining and kitchen area is flooded with natural light and is the heart of the home. Designed for contemporary living it features high end appliances, modern kitchen with sleek worktops and ample space for entertaining. A separate study area provides the perfect setup for working from home.

Located in a prime West London location this home benefits from excellent transport links with West Ealing offering easy access to Central London via the Elizabeth Line. The area is well known for schools, green spaces and a good selection of cafes, restaurants and shops.

Features

- New Build
- One Bedroom Plus Study
- High Specification
- Eco Friendly
- Close To Station
- Close To Shops

Cranmer Avenue, LONDON, W13



Ground Floor

Approx. Gross Internal Floor Area: 65.91 sq. m (709 sq. ft)

Approx. Balcony Area : 13.9 sq. m (149.6 sq. ft)