

Waldeck Mews

Chiswick, W4

Dexters

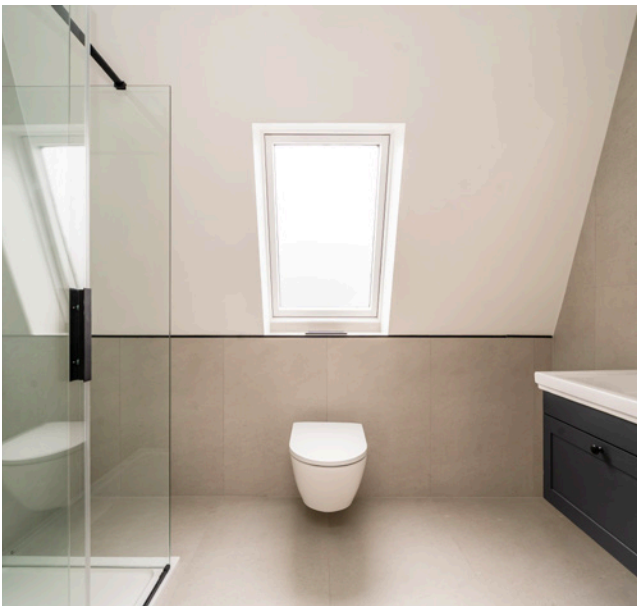


Welcome to Waldeck Mews

Waldeck Mews is a brand new boutique development of just 5 luxury homes. Each home has been carefully crafted with a high specification and a light and airy feel.

These homes are ideally located just off Strand on the Green, the stunning Thames side location in Chiswick with access to the Thames path. There are a few independent shops close by along with riverside gastro pubs, cafes and restaurants. The development provides excellent transport links with direct links to London Waterloo.

These homes provide a range of options for those looking to reside near the lush landscapes of Kew Gardens and the historic charm of Chiswick House Grounds, all while enjoying modern amenities and excellent connectivity to central London.



*CGI imagery is indicative and may differ from the final product.

Specification

Kitchen

- Hotpoint 70/30 fridge freezer
- Hotpoint dishwasher
- Hotpoint washer dryer
- Hotpoint hob
- High specification kitchens with stylish handleless wall and base units
- Luxurious and hard wearing 20mm Carrara Vito Quartz stone worktop, upstanding and splashback
- Kitchen tap mounted to work surface

Bathroom

- Stylish black finishing giving a modern look
- Black heated towel rail
- LED Mirror with shaving/toothbrush port

Heating and electrics

- High specification solid core painted doors
- Black stylish handles, hinges, sockets and radiators
- Luxury spacious hallways with skylight at top floor

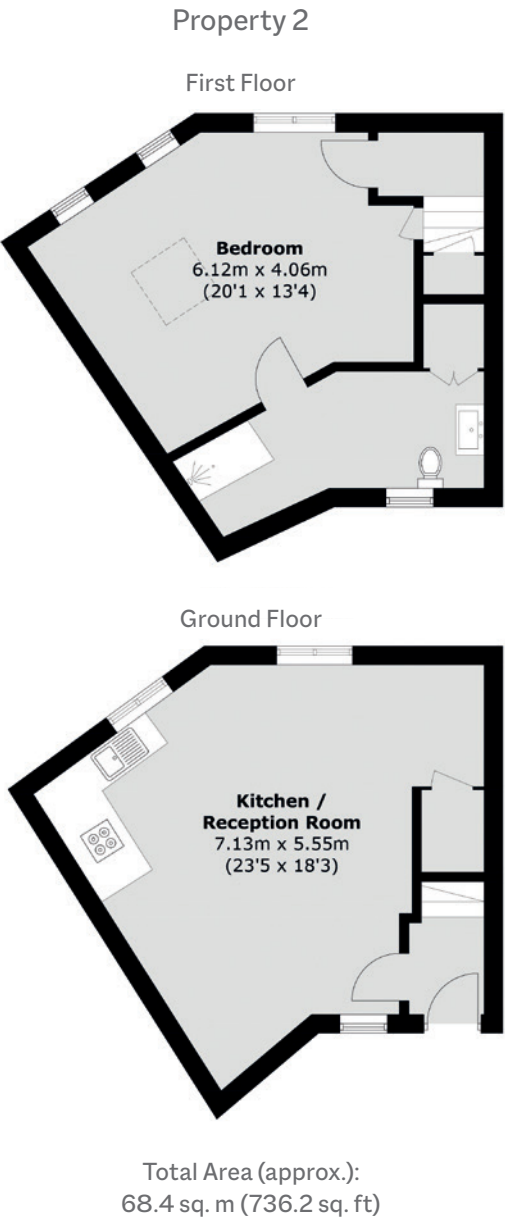
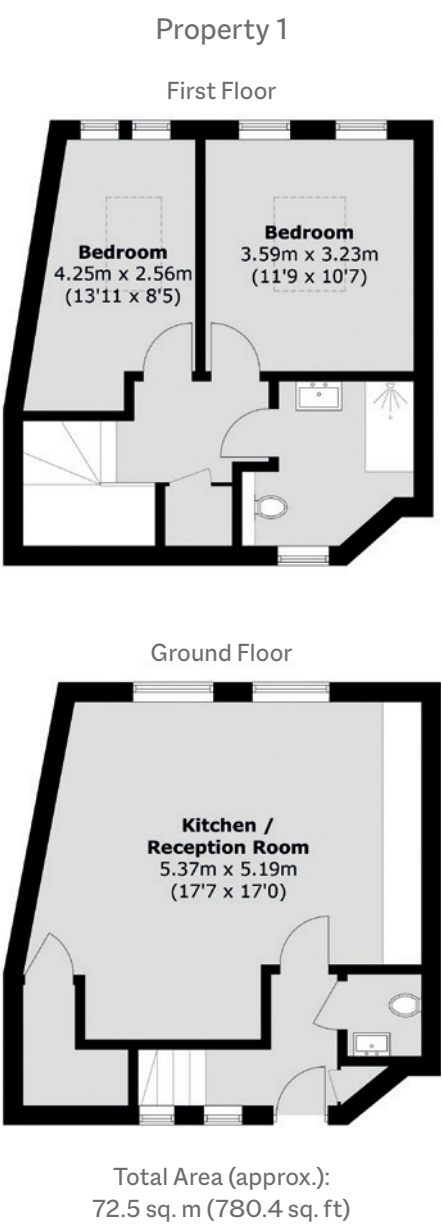
Interiors

- Black power points in all areas
- Walls painted in emulsion paints
- Engineered floor in hallways, kitchen, living space and bedrooms
- Porcelain tiling in building entrance

Security & External

- Intercom phones
- Secure bike storage
- Private bin storage

Floorplans



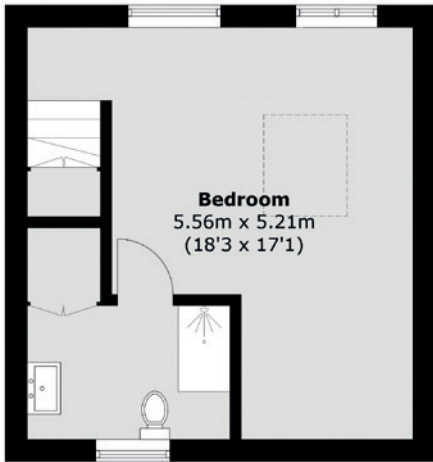
* Specifications are subject to change by the developer at any time

*Floorplans are approx sizes and considered as a guide only

Floorplans

Property 3

First Floor



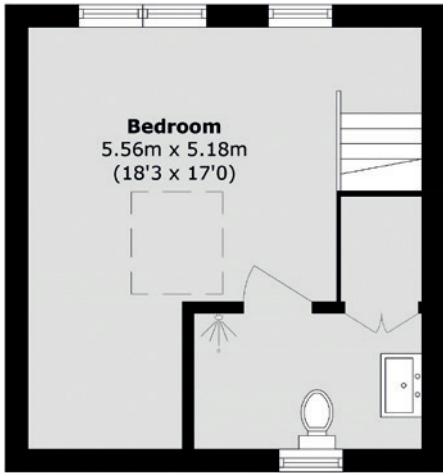
Ground Floor



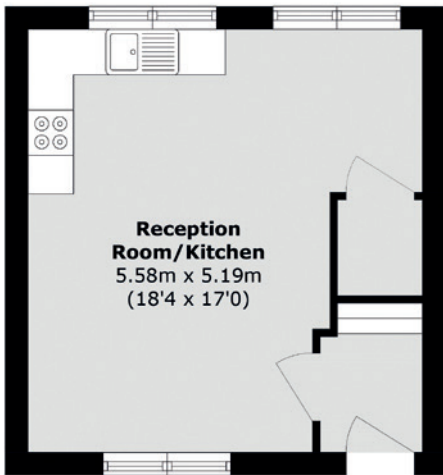
Total Area (approx.):
58.1 sq. m (625.3 sq. ft)

Property 4

First Floor



Ground Floor



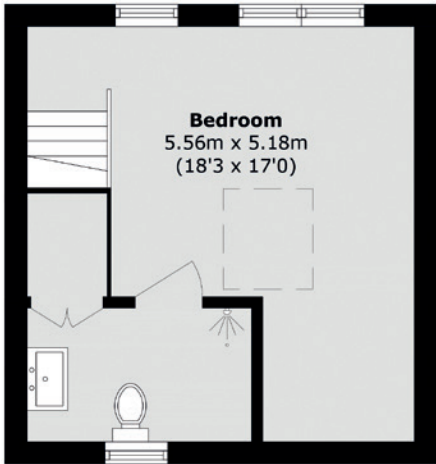
Total Area (approx.):
57.7 sq. m (621.0 sq. ft)

*Floorplans are approx sizes and considered as a guide only

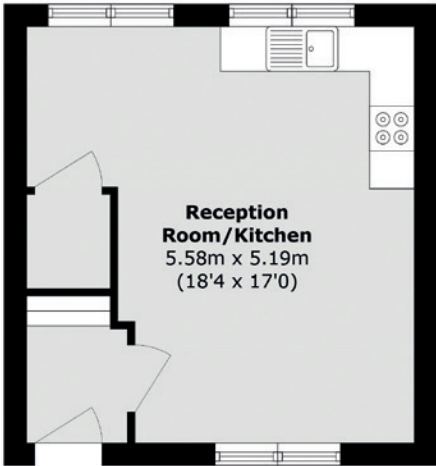
Floorplans

Property 5

First Floor

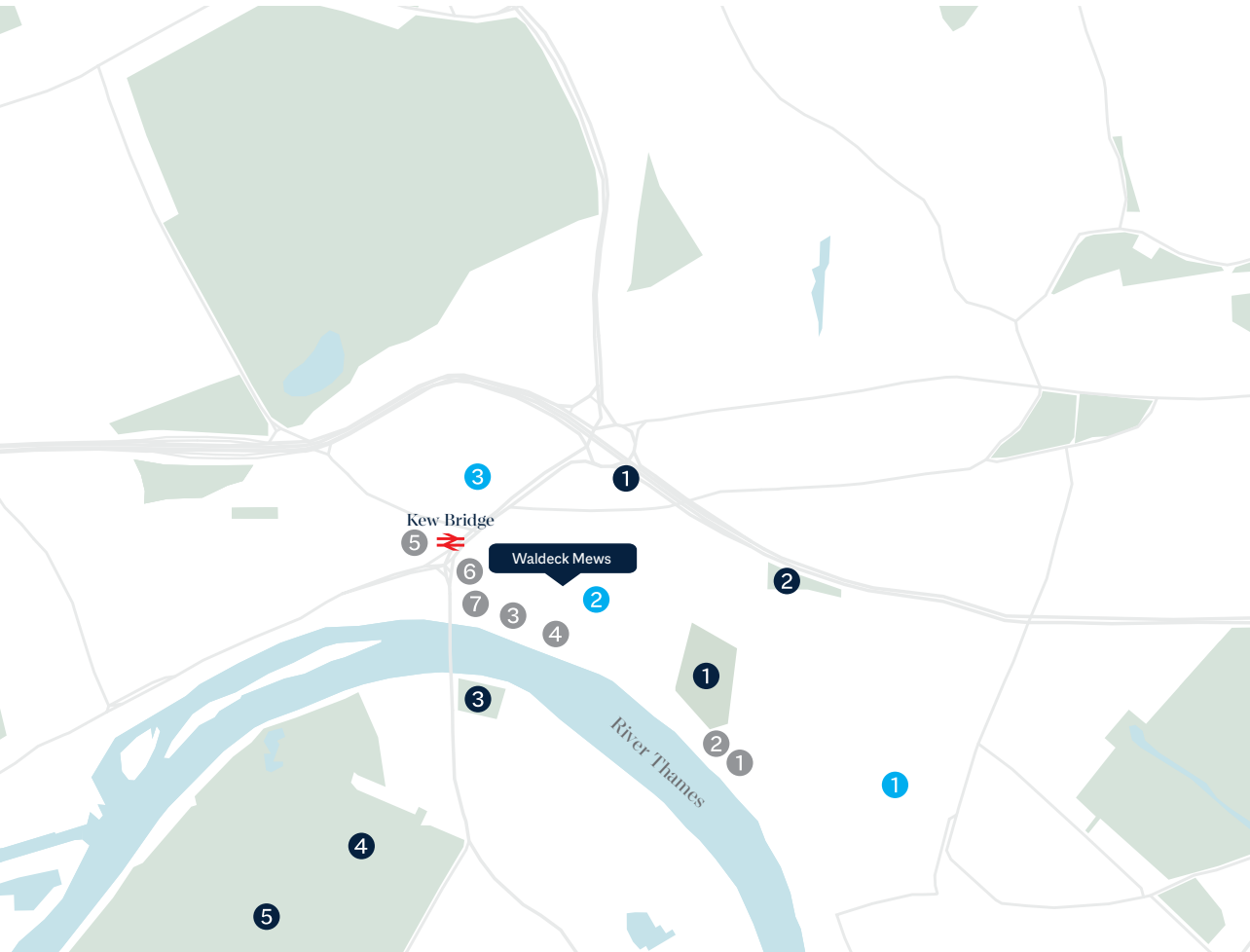


Ground Floor



Total Area (approx.):
57.7 sq. m (621.0 sq. ft)

*Floorplans are approx sizes and considered as a guide only



Eating, dining and amenities	Parks and recreation	Schools
<div>1. Annie's,</div> <div>2. The City Barge</div> <div>3. The Bell & Crown</div> <div>4. The Steam Packet</div> <div>5. Costa</div> <div>6. Strand cafe</div> <div>7. Ecolavera restaurant</div>	<div>1. Strand on the Green</div> <div>2. Harvard Hill</div> <div>3. Westerley Ware</div> <div>4. Kew Green</div> <div>5. Kew Gardens</div>	<div>1. Grove Park School</div> <div>2. Strand on the Green Junior School</div> <div>3. Kew House School</div>

Strand-on-the-Green is a charming riverside hamlet in Chiswick, West London, known for its historic character and stunning Thames views. Lined with 18th-century cottages and period homes. The scenic riverside path is perfect for leisurely strolls, cycling, and rowing, attracting both locals and visitors. Several traditional pubs, such as The Bell & Crown and The City Barge, offer picturesque settings for dining and drinks by the water. Rich in history and community spirit, Strand-on-the-Green provides a peaceful retreat from London’s hustle, making it one of the city’s most enchanting and sought-after riverside locations.

New Homes West London

20 Claremont Road,
Surbiton,

KT6 4QU

020 8614 1222

newhomeswest@dexters.co.uk

Dexters

dexters.co.uk