



Gordon Road, W5

£925,000

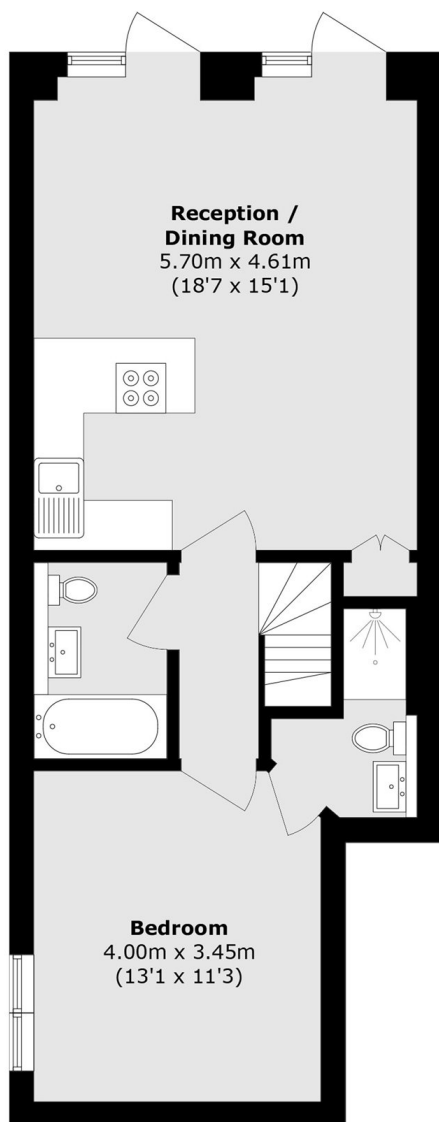
Apartment 3 within the Willow Apartments is a spacious 3 bedroom home with more than 1000 sq ft of internal area, an off street parking space and two terraces.

Gordon Road sits conveniently between Ealing Broadway Station, served by the Elizabeth, Central, and District lines, and West Ealing Station on the Elizabeth Line placing central London within 15 minutes and making daily commuting effortlessly smooth.

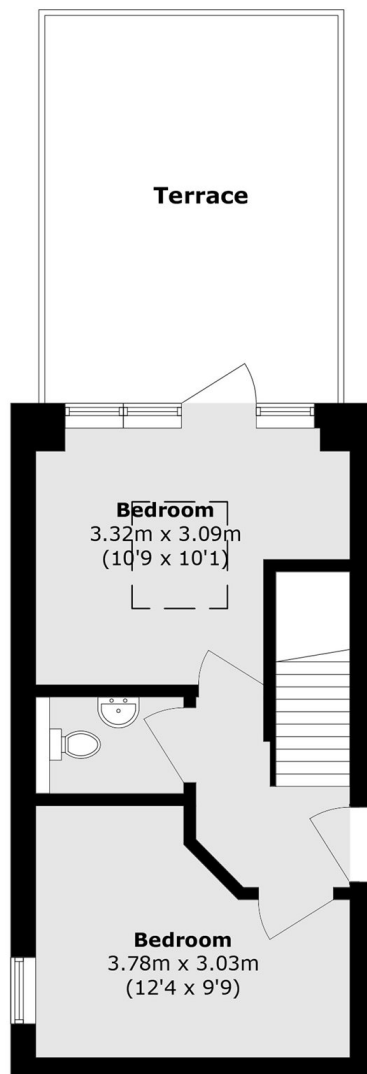
Features

- Share Of Freehold
- 10 Year Build Warranty
- High Specification
- Close To Train Station
- Close To Ealing Broadway

Gordon Road, London, W5



Lower Ground Floor



Ground Floor

Total area (approx.): 81.6 sq. m (878.3 sq. ft)
Terrace area (approx.): 16.5 sq. m (177.6 sq. ft)