



WETHERELL
MAYFAIR'S FINEST PROPERTIES



ROSE & CROWN YARD, SW1Y

£899,000

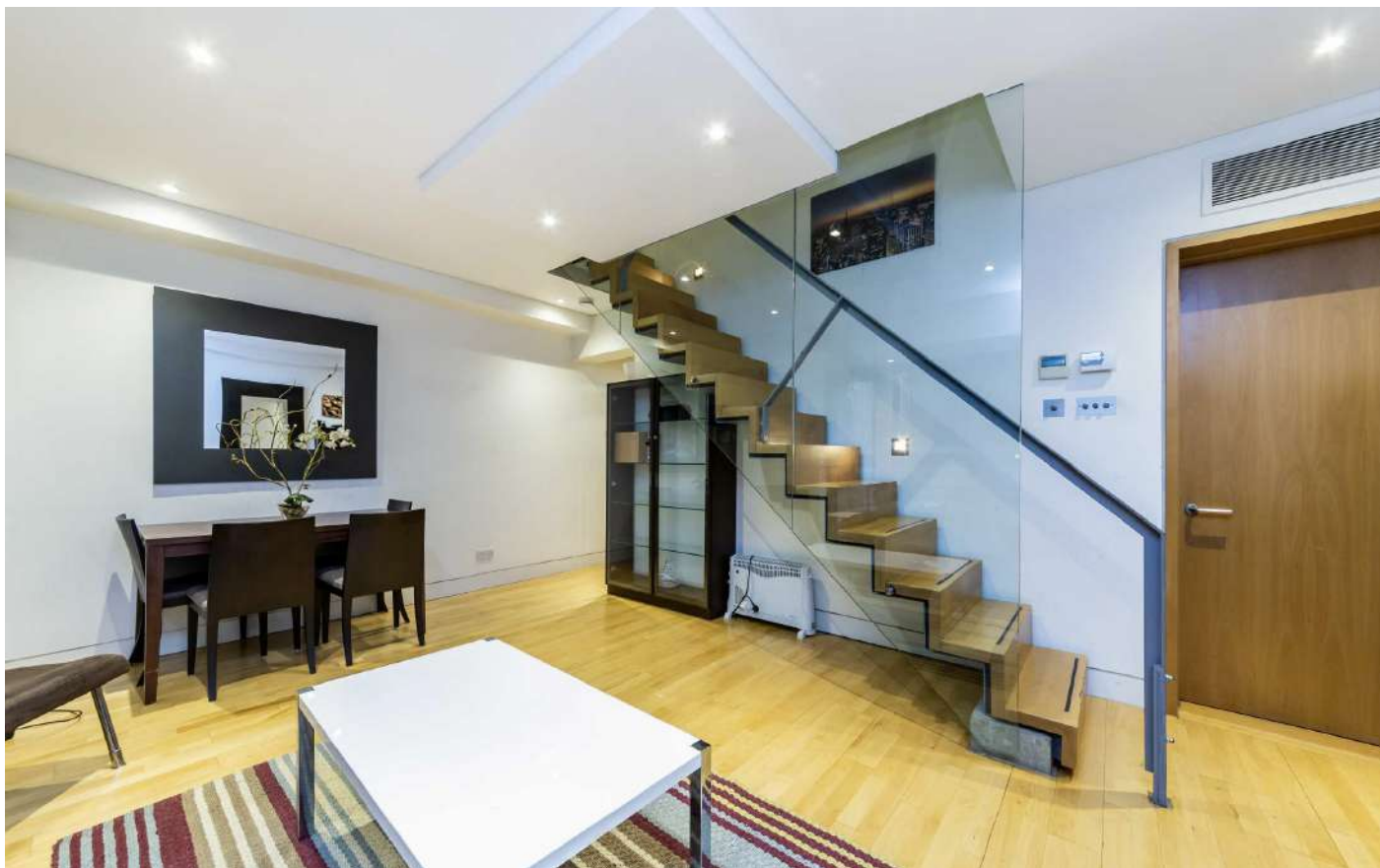
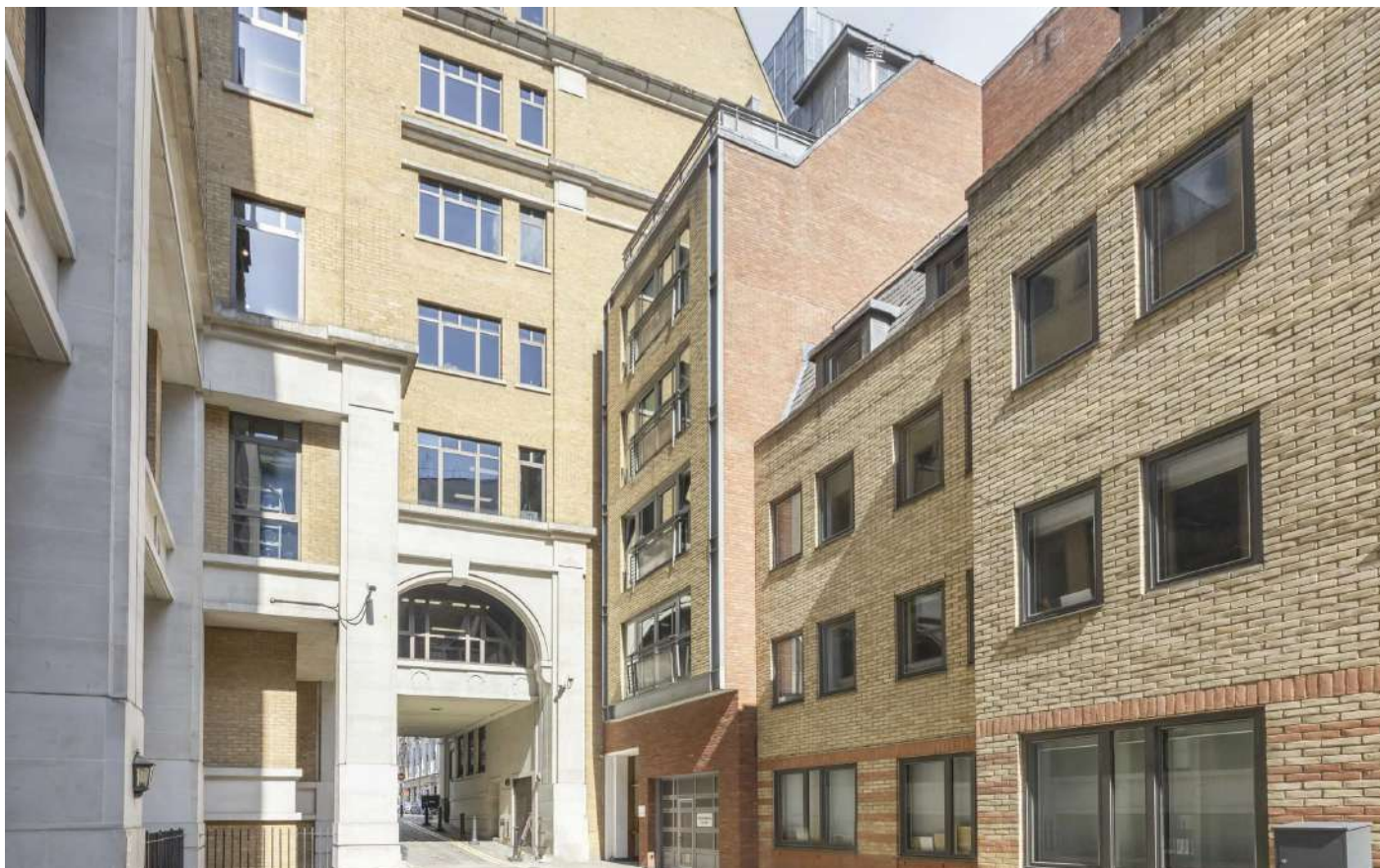
A well presented one bedroom apartment in the heart of St James's with secure parking and long leasehold.

This innovative designed one bedroom duplex apartment is situated on the first and second floor of this modern purpose built block in the centre of historic St James's.

The first floor comprises a large reception room, striking glass-panelled staircase and a separate kitchen. The second floor has a large bedroom with built-in storage and en suite bathroom plus a separate storage cupboard.

The property comes with a secure single parking space and is conveniently located off King Street.

ROSE AND CROWN YARD IS A QUIET MEWS PERFECTLY LOCATED MOMENTS FROM ST JAMES'S SQUARE, ST JAMES'S PARK, GREEN PARK AND THE SEEMINGLY ENDLESS BOUTIQUES, SHOPS, RESTAURANTS AND BARS OF ST. JAMES'S AND MAYFAIR.

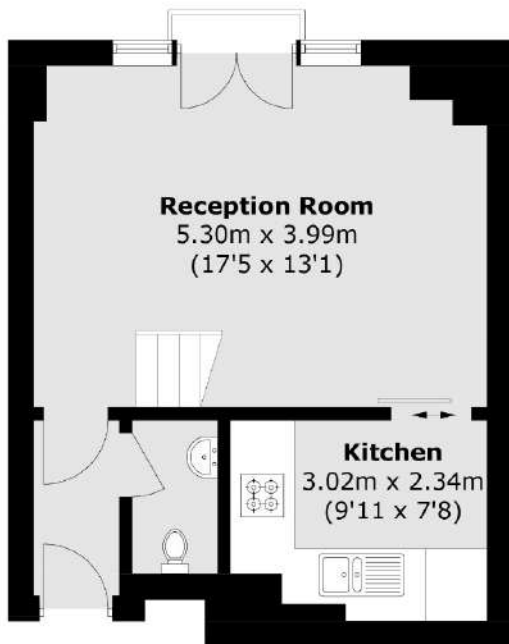


FEATURES

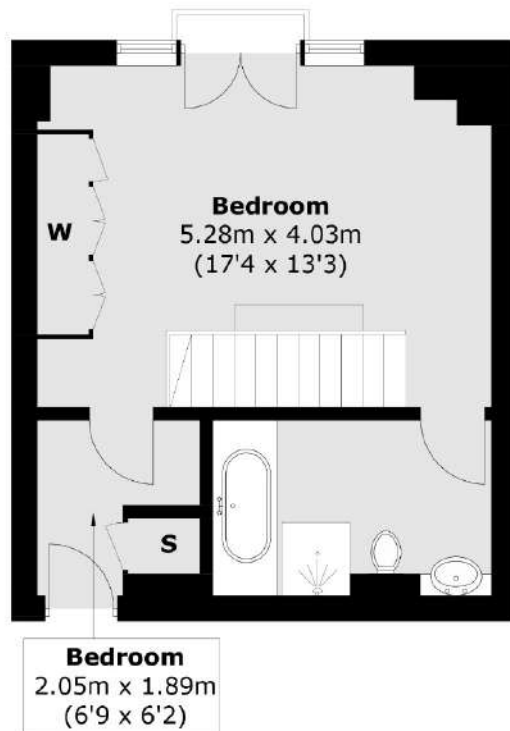
- One Bedroom • Duplex • Prime St. James's Location • 721 sq. ft • Secure Parking • Long leasehold •



ROSE & CROWN YARD, LONDON, SW1Y



First Floor



Second Floor

Total area (approx.): 67.0 sq. m (721.1 sq. ft)
Balcony Area: 0.9 sq. m (9.7 sq. ft)



WETHERELL
MAYFAIR'S FINEST PROPERTIES

102 Mount Street,
London, W1K 2TH
T: 020 7529 5566
E: sales@wetherell.co.uk

We aim to make our particulars both accurate and reliable. However they are not guaranteed; nor do they form part of an offer or contract. If you require clarification on any points then please contact us, especially if you're traveling some distance to view. Please note that appliances and heating systems have not been tested and therefore no warranties can be given as to their working order.

wetherell.co.uk