



WETHERELL
MAYFAIR'S FINEST PROPERTIES



GROSVENOR STREET, W1K

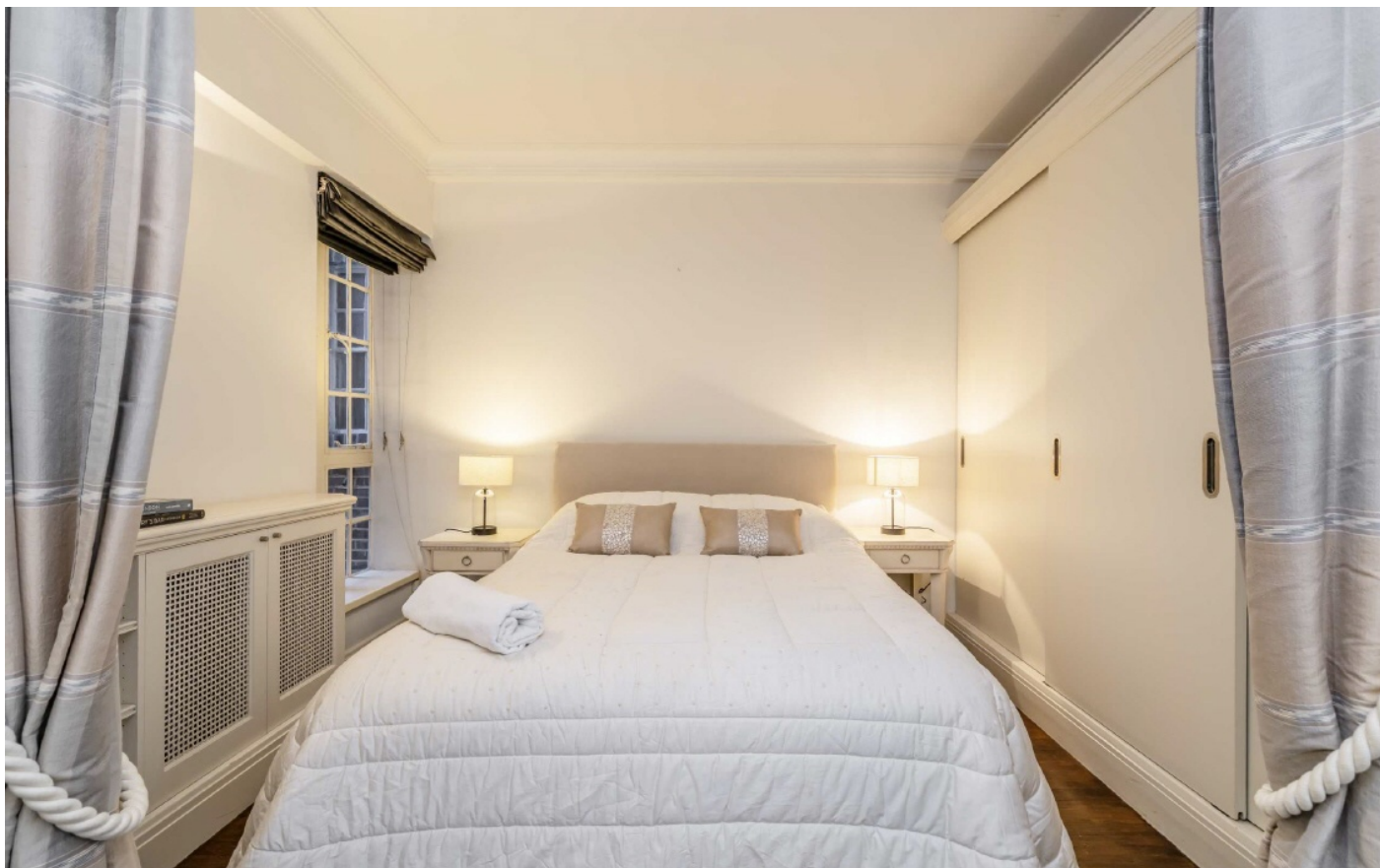
£700,000

A one bedroom apartment set on the fourth floor of a smart art-deco block on Grosvenor Street with a share of the freehold.

This apartment of 419 sq.ft is well presented throughout and quietly positioned at the rear of this purpose built block with views over Three Kings Yard, a lift and a porter.

Comprising a reception room, separate kitchen, a large bedroom with built-in wardrobes and separate bathroom. Originally built in Neo-Georgian style in 1933-1935 as Gentleman's Chambers and moments from picturesque Grosvenor Square, the apartment is ideal as a pied-à-terre or a buy to let investment.

THE APARTMENT IS 35 MINUTES FROM HEATHROW VIA CROSSRAIL AND CLOSE TO A MULTITUDE OF MICHELIN STARRED RESTAURANTS AND SOME OF THE FINEST STORES IN LONDON.

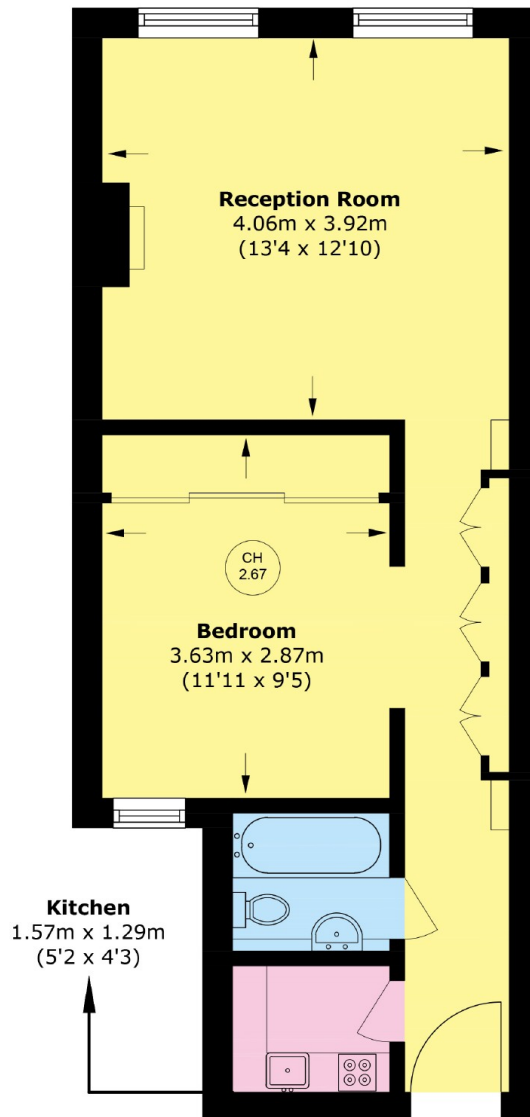


FEATURES

- One Bedroom • One Bathroom • Kitchen • Lift • Porter • Share of Freehold •



GROSVENOR STREET, LONDON, W1K



Total area (approx.): 39.0 sq. m (419.7 sq. ft)



WETHERELL
MAYFAIR'S FINEST PROPERTIES

102 Mount Street,
London, W1K 2TH
T: 020 7529 5566
E: sales@wetherell.co.uk

We aim to make our particulars both accurate and reliable. However they are not guaranteed; nor do they form part of an offer or contract. If you require clarification on any points then please contact us, especially if you're traveling some distance to view. Please note that appliances and heating systems have not been tested and therefore no warranties can be given as to their working order.

wetherell.co.uk