



**WETHERELL**  
MAYFAIR'S FINEST PROPERTIES



## STRATTON STREET, W1J

£2,076 PER WEEK

Positioned within a portered building on the prestigious Stratton Street, this impeccably presented two bedroom, two bathroom apartment offers luxury living in the heart of Mayfair.

This brand new renovation is thoughtfully designed to maximise space and light. It features high ceilings that enhance the sense of openness, and large windows that allow for excellent natural light.

The apartment offers well proportioned lateral living, featuring two large double bedrooms, each with a stylish en-suite bathroom. A separate guest WC adds further convenience.

The front reception room provides an impressive space for entertaining or relaxing, with high ceilings and large windows. The fully integrated kitchen offers both functionality and elegance.

Further benefits include air conditioning and a daytime porter service, offering additional convenience and security. The property is presented in excellent condition throughout, with neutral décor and quality finishes.

STRATTON STREET IS AN ATTRACTIVE ADDRESS IN THE HEART OF MAYFAIR, MOMENTS AWAY FROM THE RENOWNED SHOPPING OF BOND STREET AND OXFORD STREET. THE LOCATION OFFERS EXCELLENT TRANSPORT LINKS AND IS WITHIN WALKING DISTANCE OF





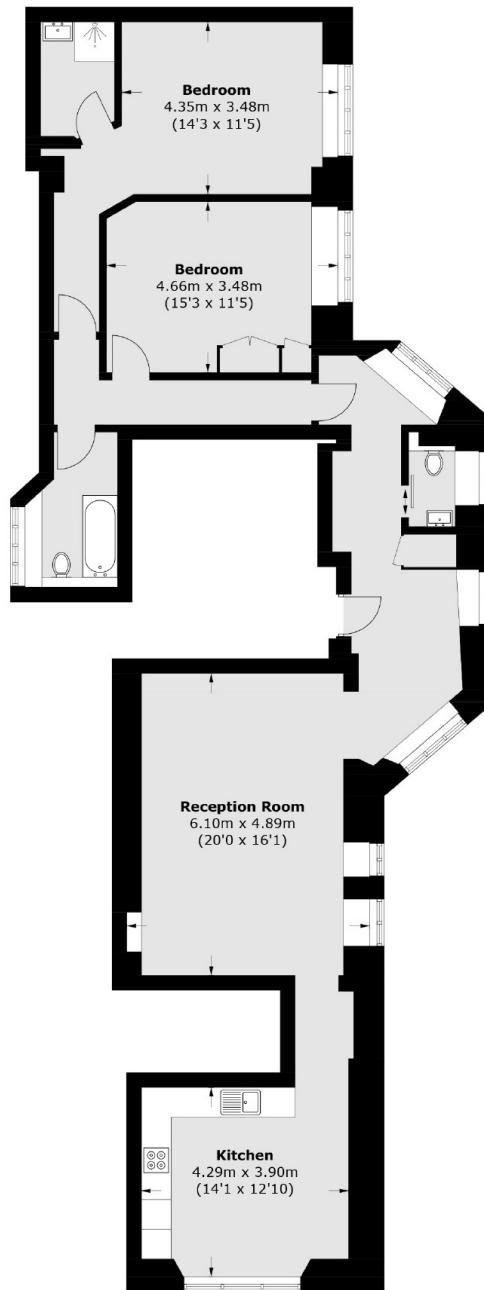
## FEATURES

- Two Spacious Double Bedrooms • Porter • Air Conditioning • 24hr CCTV • Wooden Flooring • High Quality Furnishings •





# STRATTON STREET, LONDON, W1J



**Ground Floor**

Total area (approx.): 114.7 sq. m (1,234.6 sq. ft)



**WETHERELL**  
MAYFAIR'S FINEST PROPERTIES

102 Mount Street,  
London, W1K 2TH

T: 020 7529 5588

E: [rentals@wetherell.co.uk](mailto:rentals@wetherell.co.uk)

We aim to make our particulars both accurate and reliable. However they are not guaranteed; nor do they form part of an offer or contract. If you require clarification on any points then please contact us, especially if you're traveling some distance to view. Please note that appliances and heating systems have not been tested and therefore no warranties can be given as to their working order.



Regulated  
Estate Agent  
and Letting Agent

[wetherell.co.uk](http://wetherell.co.uk)