



WETHERELL

MAYFAIR'S FINEST PROPERTIES



MADDOX STREET, W1S

£1,350,000

A stunning one bedroom apartment with floor to ceiling windows and a long lease.

This smart, lateral apartment measures 720 sq ft and is situated on the second floor of a period building in Mayfair, moments from London's famous Bond Street.

The open plan reception room/kitchen diner measures 24 feet in length and benefits from a south facing, dual aspect position with 2 ornamental balconies and 4 floor to ceiling windows allowing an abundance of natural light to flood the apartment. The kitchen is neatly positioned at the rear of the room with fully integrated appliances.

The large double bedroom comes with built in wardrobes and 3 further floor to ceiling windows and additional ornamental balcony. There is further storage in the hallway and a separate, modern bathroom.

MADDOX STREET IS SITUATED BETWEEN REGENT STREET AND GROSVENOR SQUARE, EXCEPTIONALLY WELL PLACED TO ENJOY WORLD CLASS SHOPPING, DINING AND ENTERTAINMENT INCLUDING MANY OF LONDON'S BEST PRIVATE MEMBERS CLUBS.



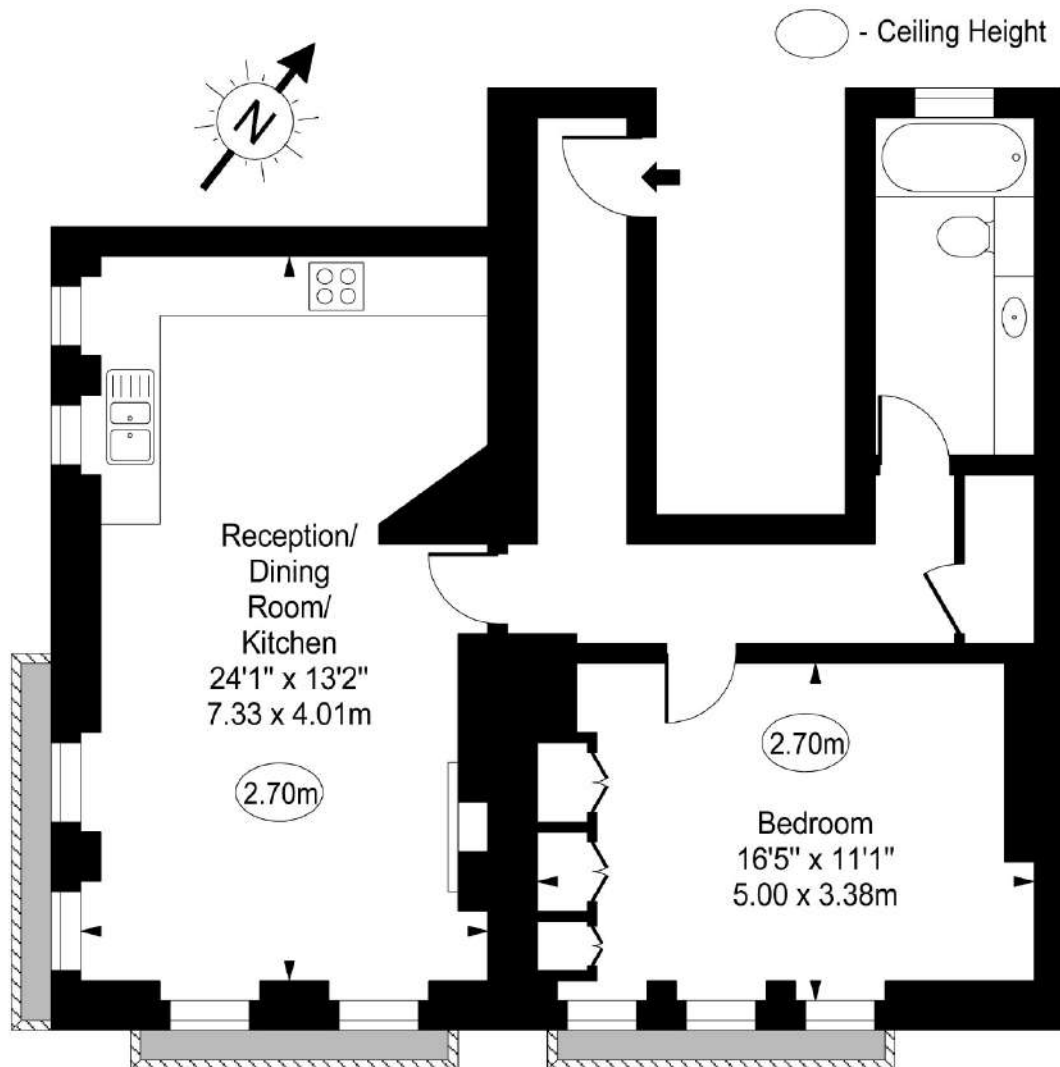
FEATURES

- Large Reception Room • One Bedroom • One Bathroom • Floor to Ceiling Windows • Three Balconies • Long Lease •



MADDOX STREET,
LONDON, W1S

Maddox Street, W1S 1PL



Second Floor

Approx Gross Internal Area **720 Sq Ft - 66.89 Sq M**

For Illustration Purposes Only - Not To Scale

www.goldlens.co.uk

Ref. No. 015790R



WETHERELL
MAYFAIR'S FINEST PROPERTIES

102 Mount Street,
London, W1K 2TH

T: 020 7529 5566

E: sales@wetherell.co.uk

We aim to make our particulars both accurate and reliable. However they are not guaranteed; nor do they form part of an offer or contract. If you require clarification on any points then please contact us, especially if you're traveling some distance to view. Please note that appliances and heating systems have not been tested and therefore no warranties can be given as to their working order.

wetherell.co.uk