



**WETHERELL**  
MAYFAIR'S FINEST PROPERTIES



## WOODS MEWS, W1K

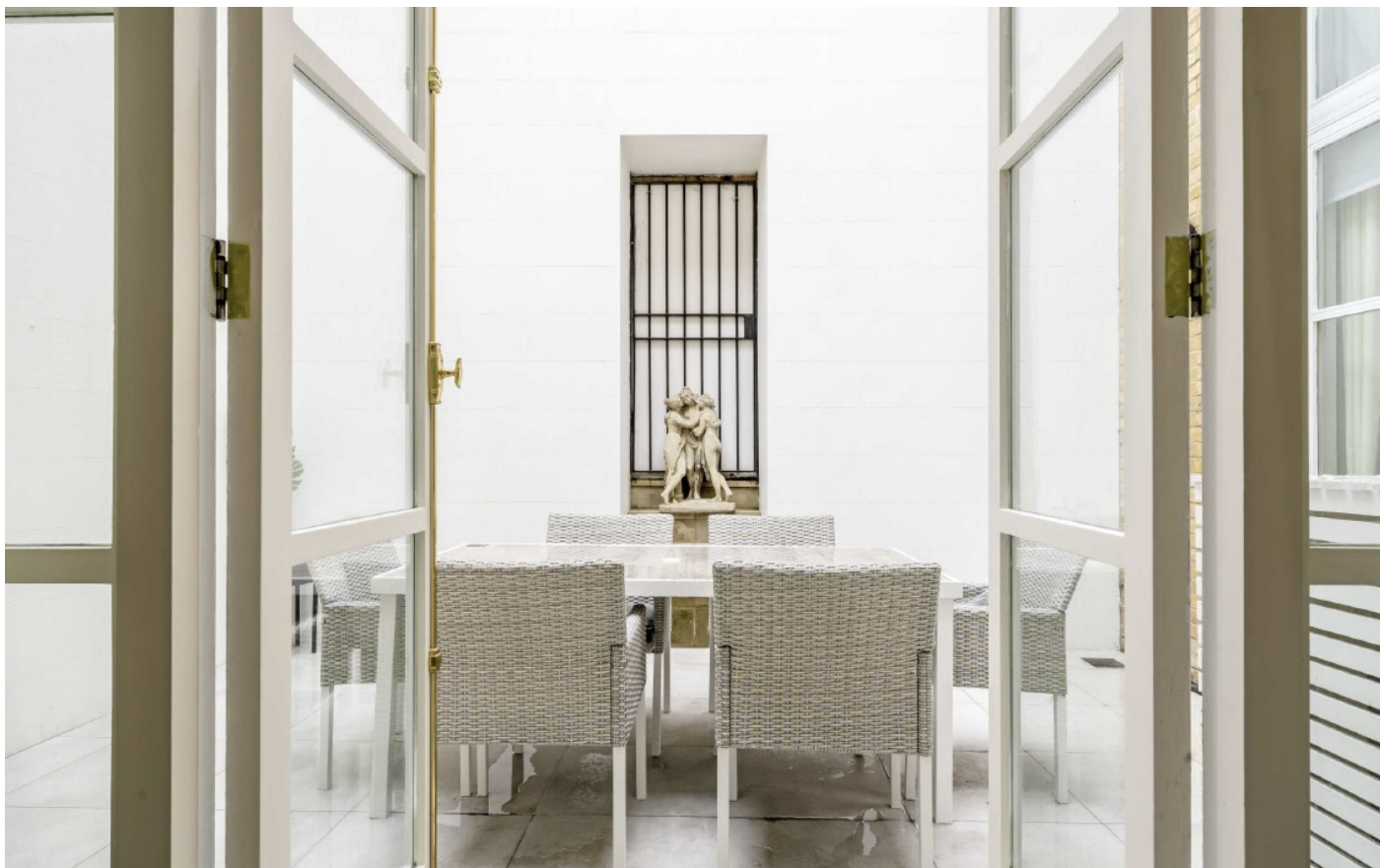
£1,950 PER WEEK

A recently refurbished split level two double bedroom maisonette on the ground and first floors of this smart building located on a quiet mews just off Park Lane.

This attractive apartment has been finished to a high standard with solid wood flooring throughout and benefits from a double height ceiling and galleried landing in the reception room with access to a private courtyard.

Accommodation comprises, entrance hall, open plan fully integrated kitchen / reception room, two double bedrooms, two en suite bathrooms and private secluded patio.

WOODS MEWS IS LOCATED BETWEEN PARK LANE AND PARK STREET CLOSE TO HYDE PARK.



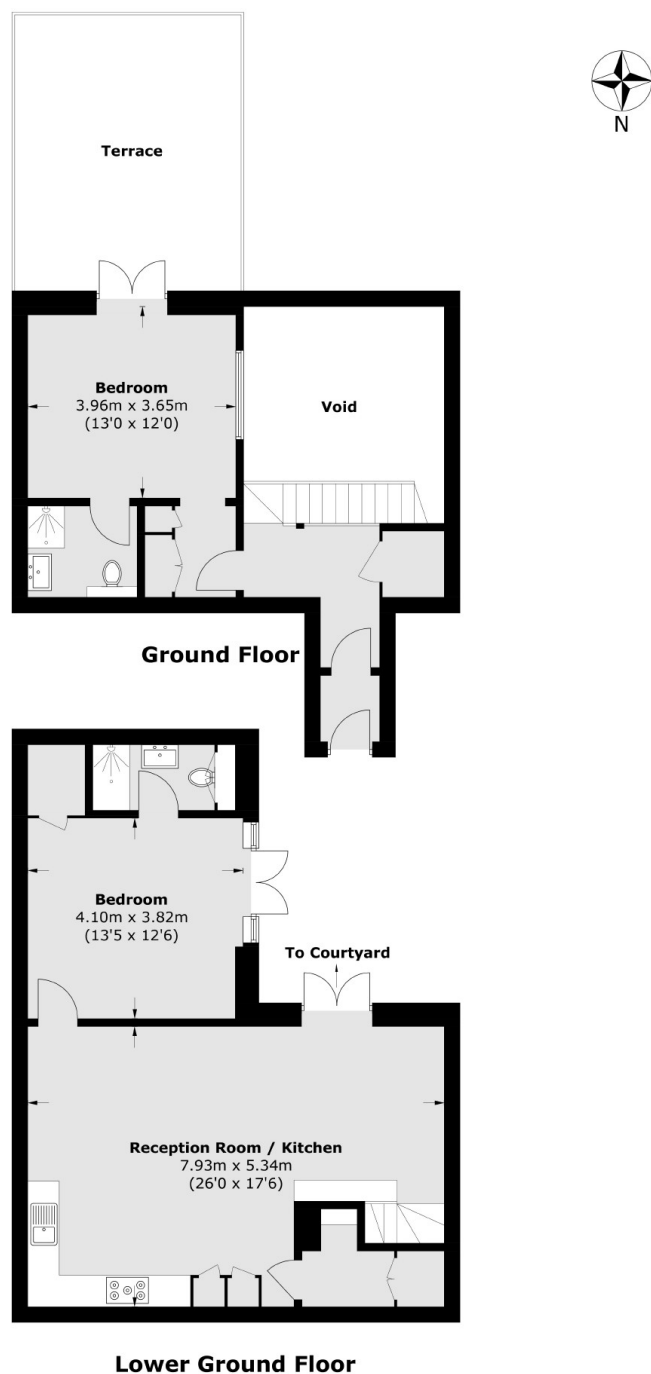
### FEATURES

- Recently Refurbished • Two Double Bedrooms • Two Modern Bathrooms • Private Courtyard • Wood Flooring • Air Conditioning •





# WOODS MEWS, LONDON, W1K



Total area (approx.): 98.3 sq. m (1,058.0 sq. ft)  
Terrace area (approx.): 22.7 sq. m (244.3 sq. ft)  
(Excluding Void)



**WETHERELL**  
MAYFAIR'S FINEST PROPERTIES

102 Mount Street,  
London, W1K 2TH

T: 020 7529 5588  
E: [rentals@wetherell.co.uk](mailto:rentals@wetherell.co.uk)

We aim to make our particulars both accurate and reliable. However they are not guaranteed; nor do they form part of an offer or contract. If you require clarification on any points then please contact us, especially if you're traveling some distance to view. Please note that appliances and heating systems have not been tested and therefore no warranties can be given as to their working order.



**RICS** | Regulated  
Estate Agent  
and Letting Agent

[wetherell.co.uk](http://wetherell.co.uk)