



**WETHERELL**  
MAYFAIR'S FINEST PROPERTIES



## NORTH AUDLEY STREET, W1K

£1,800,000

A beautifully presented two bedroom apartment in the heart of Mayfair.

Set within an attractive red brick period building on one of Mayfair's most sought-after residential streets, this elegant two-bedroom apartment offers excellent proportions and a superb central London location.

Occupying the whole of the third floor and measuring 990 sq ft apartment has been tastefully refurbished to a high standard, blending period charm with modern interiors.

The open-plan reception room and kitchen is flooded with natural light, with 3.18 metre ceiling heights and a large bay window with far reaching views over Mayfair. The principal bedroom suite built-in wardrobes and a luxurious en suite shower room. The second bedroom also has built in wardrobes and there is a large family bathroom.

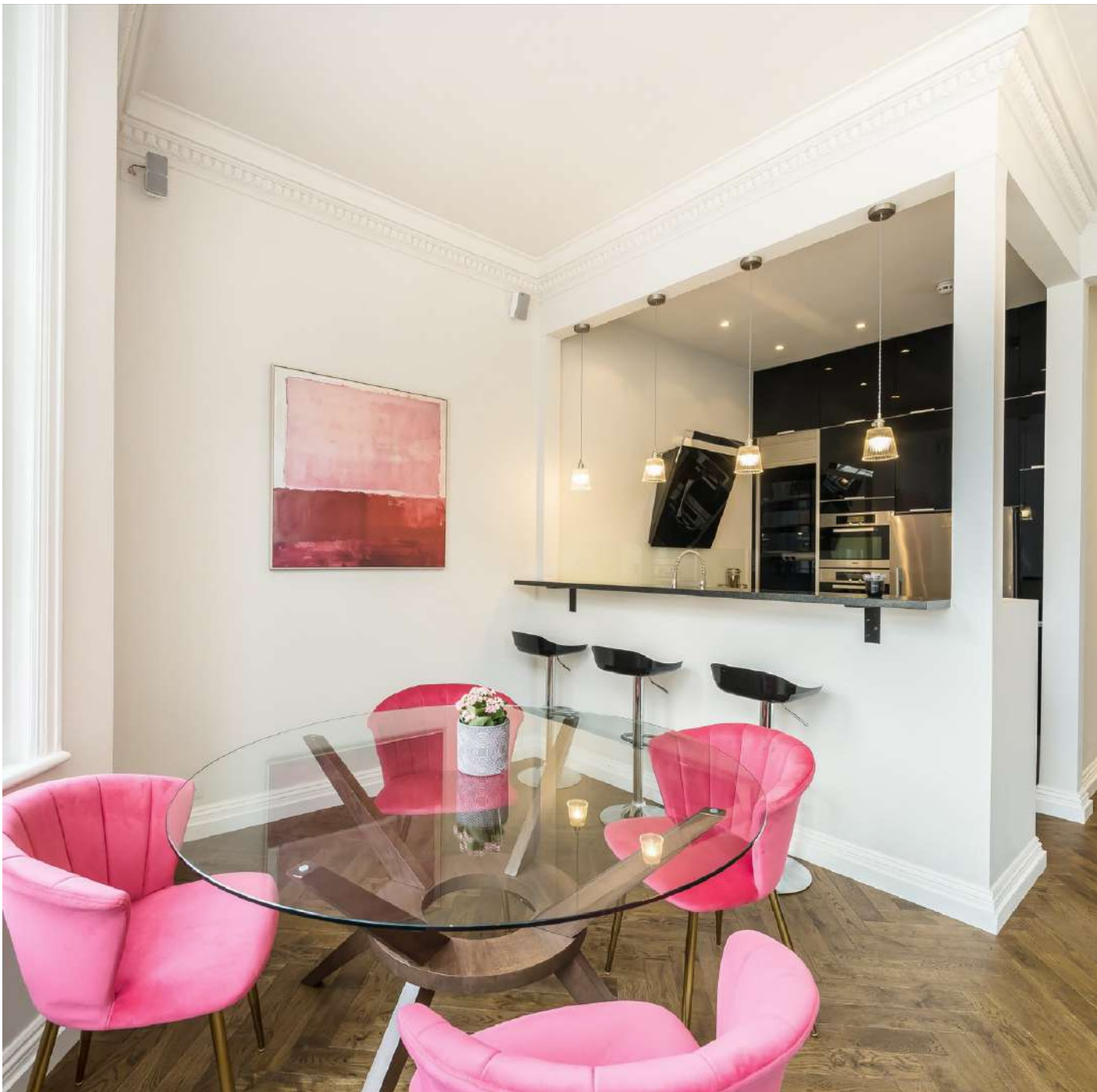
The property has central air conditioning, working gas fire, electric blinds controlled from an app, and a large walk in storage cupboard on ground floor (non demised).

NORTH AUDLEY STREET IS MAINLY MADE UP OF LATE NINETEENTH AND TWENTIETH CENTURY BUILDINGS INCLUDING A SPLENDID EIGHTEENTH-CENTURY HOUSE WITH STUCCO EXTERIOR AND A CHURCH OF CONSIDERABLE DISTINCTION.

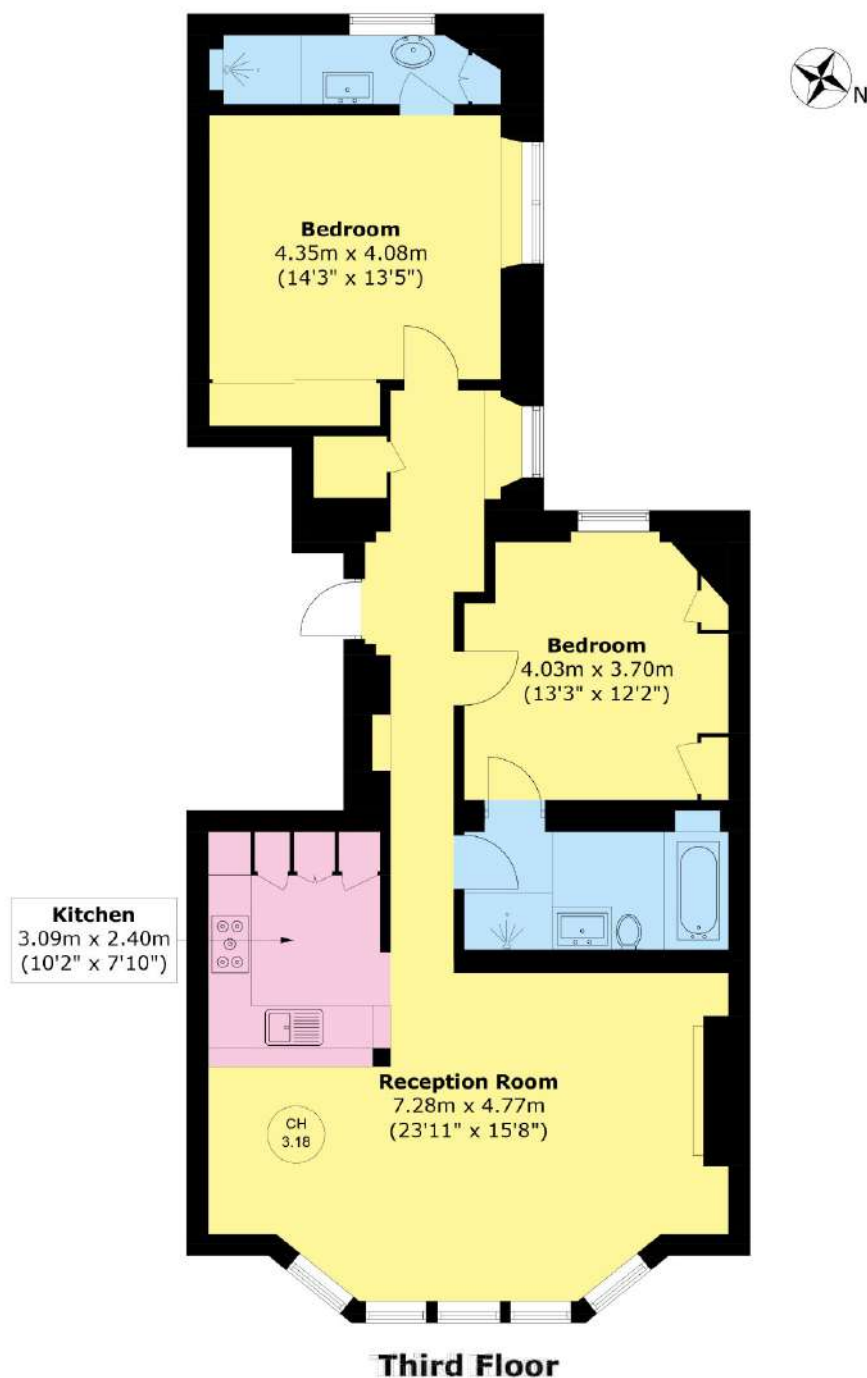


### FEATURES

- Share of Freehold • Two bedrooms • Two bathrooms • Air Conditioning • Newly renovated • High ceilings •



# NORTH AUDLEY STREET, LONDON, W1K



Total area (approx.): 92.0 sq. m (990.3 sq. ft)