



**WETHERELL**  
MAYFAIR'S FINEST PROPERTIES



## UPPER BROOK STREET, W1K

**£1,962 PER WEEK**

An exceptional, newly renovated two double bedroom apartment on the fourth floor of this attractive portered building with smart common areas.

Entering this luxurious property you are greeted by an entrance hallway that leads to a 25 ft south facing reception room with five large windows which welcome an abundance of natural light, and high ceilings offering a perfect setting for entertaining.

The property is partially furnished with two large double bedrooms both with built in storage, main bedroom with luxury, newly installed en suite and a separate family bathroom services the second bedroom.

The building is on the South side of Upper Brook Street between Park Street and Park Lane close to Hyde Park.

NEXT TO THE FAMOUS LE GAVROCHE RESTAURANT THIS APARTMENT IS CONVENIENTLY SITUATED WITHIN EASY ACCESS TO THE WORLD RENOWNED RESTAURANTS AND BOUTIQUES OF MAYFAIR.





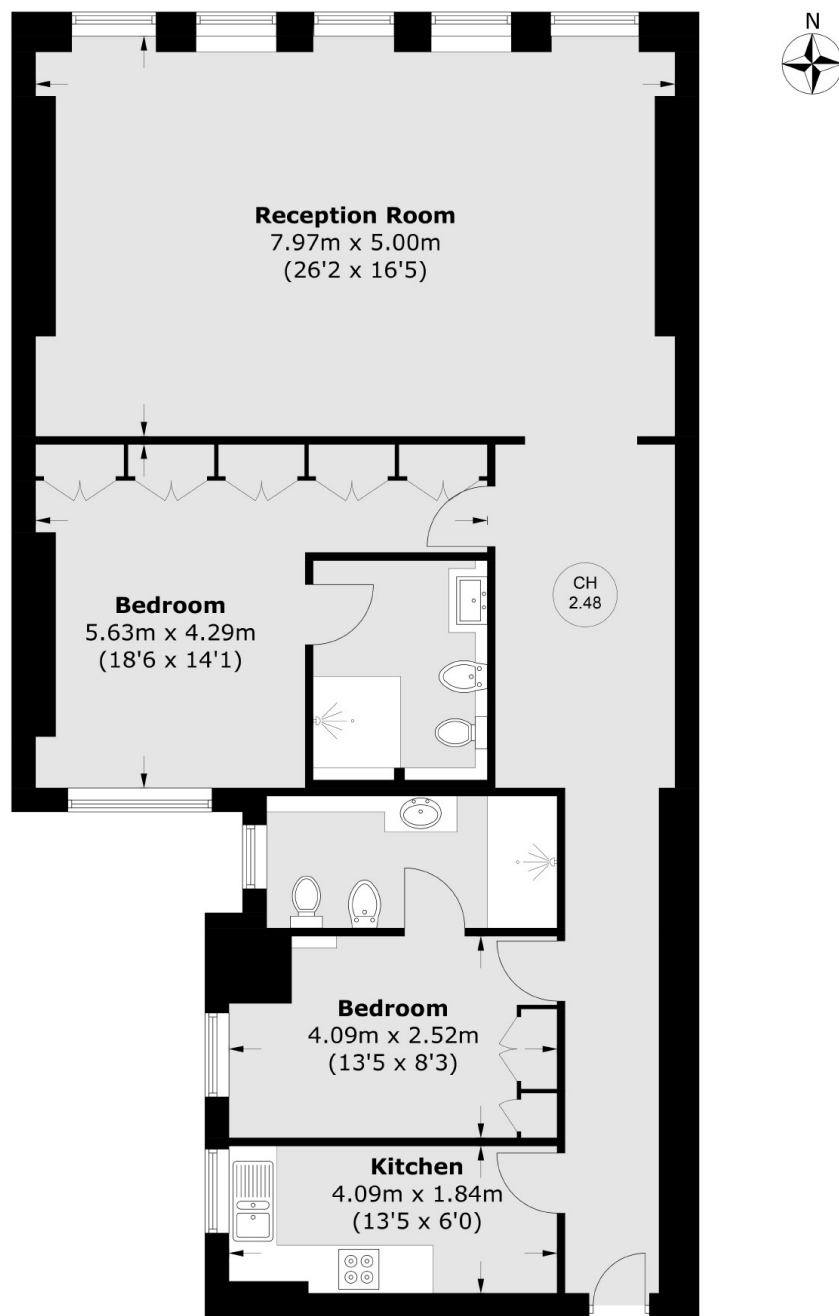
### FEATURES

- Newly Renovated • Two Double Bedrooms • Two Bathrooms • High Ceilings • Wooden Flooring • Porter •





# UPPER BROOK STREET, LONDON, W1K



## Fourth Floor

Total area (approx.): 109.4 sq. m (1178.0 sq. ft)