

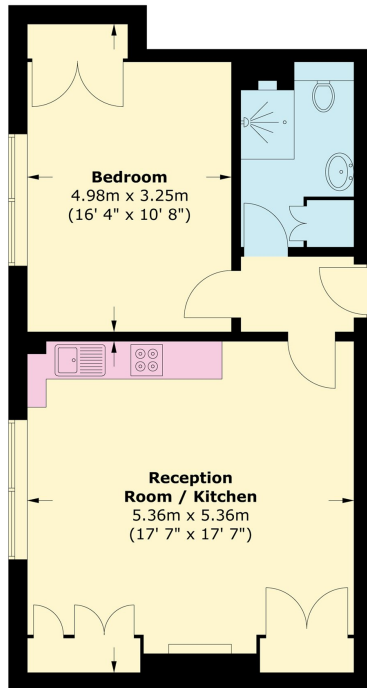


Jermyn Street

Mayfair SW1Y



A brand newly renovated one bed apartment in this highly desired, historic block with a porter. The property has a spacious open-plan kitchen living room with ample built-in storage, spacious double bedroom and luxury shower room.



Second Floor

Total area (approx.) : 53.3 sq. m (574 sq. ft)



FEATURES

- Brand New Renovation
- Spacious Double Bedroom
- Large Bay Windows
- Luxury Fixtures, Fittings and Furnishings
- Wooden Flooring Throughout
- Porter
- Lift Access

Price: £875 Per week

We aim to make our particulars both accurate and reliable. However they are not guaranteed; nor do they form part of an offer or contract. If you require clarification on any points then please contact us, especially if you're traveling some distance to view. Please note that appliances and heating systems have not been tested and therefore no warranties can be given as to their working order. **Energy Rating:**

The building is located in the centre of London's oldest district and is close to the many amenities of St. James's, Mayfair, Piccadilly and Soho. Piccadilly and Green Park are the nearest tube stations offering variety of train lines such as the Piccadilly, Jubilee and Victoria lines.



WETHERELL
MAYFAIR'S FINEST PROPERTIES

102 Mount Street • London • W1K 2TH
T: 020 7529 5588 E: rentals@wetherell.co.uk

wetherell.co.uk

NO ONE KNOWS MAYFAIR BETTER THAN WETHERELL