

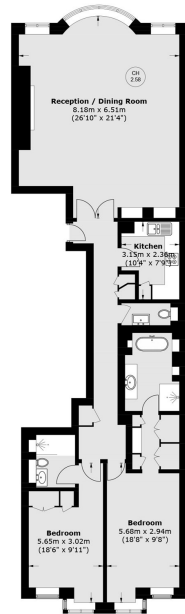


# Pall Mall

St James's SW1Y



This beautifully presented, third floor two bedroom apartment is approximately 1,278 sq ft and has views over Pall Mall and St James's Palace from the reception room. This lateral apartment offers a large comfortable living space with well-proportioned rooms and an abundance of natural light.



Third Floor

Total area (approx.): 119.1 sq.m (1,281.9 sq. ft)



The apartment comprises a reception room with large south facing windows, the bedrooms feature built in wardrobes and luxury en-suite bathrooms, and a fully integrated, separate kitchen. Further benefits include fully integrated central air conditioning and heating system.

The building features a day porter, high-speed fibre Internet, on-street parking, lift access and a secure private floor.

#### FEATURES

- Spacious Principal Bedroom with En-Suite Bathroom
- Further Double Guest Bedroom with En-suite Bathroom
- Further Cloakroom
- Luxury Fixtures, Fittings and Furnishings
- Excellent Storage
- Recent Refurbishment

Price: £2,200 Per week

We aim to make our particulars both accurate and reliable. However they are not guaranteed; nor do they form part of an offer or contract. If you require clarification on any points then please contact us, especially if you're traveling some distance to view. Please note that appliances and heating systems have not been tested and therefore no warranties can be given as to their working order. **Energy Rating:**

It is located on Pall Mall in St James's and a one minute walk from both Green Park and St James's Park. This area contains some of London's most iconic landmarks, including the National Gallery, Trafalgar Square, Buckingham Palace, The Ritz and more.

The transport links are great including both Green Park and Piccadilly underground stations approximately 0.4 miles benefitting from the Jubilee, Piccadilly and Victoria lines.



**WETHERELL**  
MAYFAIR'S FINEST PROPERTIES

102 Mount Street • London • W1K 2TH  
T: 020 7529 5588 E: [rentals@wetherell.co.uk](mailto:rentals@wetherell.co.uk)

[wetherell.co.uk](http://wetherell.co.uk)

NO ONE KNOWS MAYFAIR BETTER THAN WETHERELL