



**WETHERELL**  
MAYFAIR'S FINEST PROPERTIES



## Queen Street, W1J

**£3,500 Per week**

A contemporary three bedroom, three bathroom lateral apartment finished to the highest specification, set within this newly converted boutique development.

Set on the third floor, this impressive apartment comprises of an elegant double reception room spanning more than eleven metres, which is the entire width of the two buildings.

The principal bedroom has the added luxury of a large dressing area and a spacious en-suite with separate bath, twin basins and shower. It benefits from a further two double bedrooms, two balconies and direct lift access to the apartment.

Queen Street is superbly situated in the heart of Mayfair with all the facilities on offer, members clubs, Shepherd Market, Berkeley Square and Bond Street are all within walking distance.

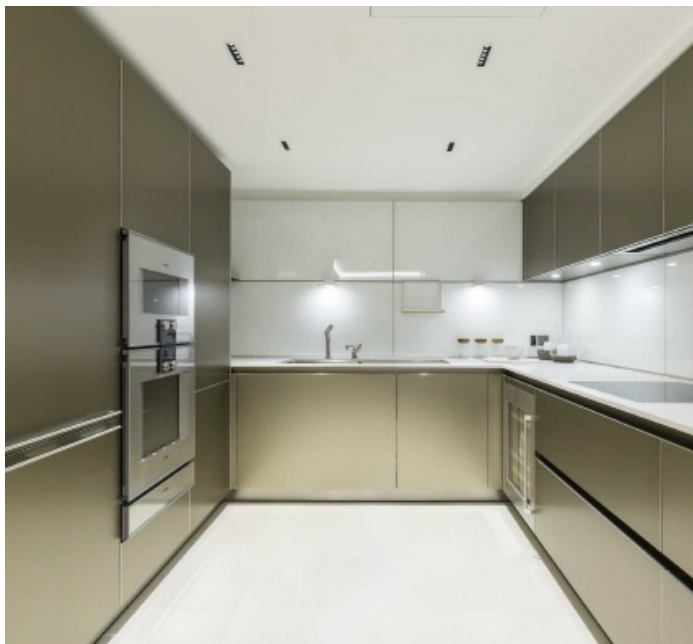




## FEATURES

- Three Spacious Double Bedrooms • Open Plan Double Reception • Luxury En-Suite Bathrooms • Two Balconies • Lift Access • Porter •

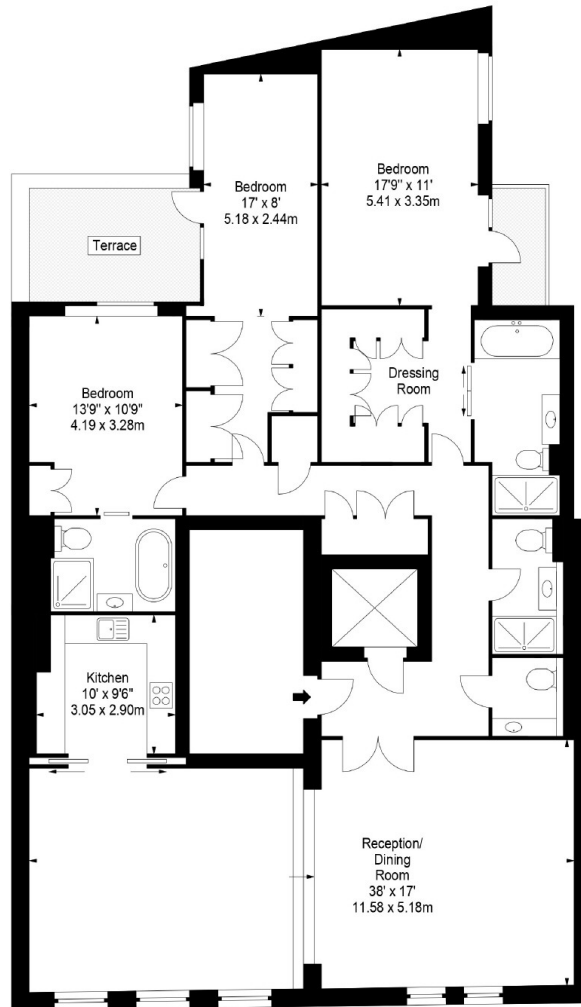




Queen Street,  
London, W1J

APPROX. GROSS INTERNAL AREA \*  
1919 Ft<sup>2</sup> - 178.27 M<sup>2</sup>

**Illustration For Identification Only, Not to Scale**  
**All Calculations include Any/All Areas Under 1.5m Head Height.**  
 \* As Defined by RICS - Code of Measuring Practice



THIRD FLOOR



www.bkrfloorplans.co.uk  
T: 0845 257 2023  
© BKR 2016



**WETHERELL**  
MAYFAIR'S FINEST PROPERTIES

102 Mount Street,  
London, W1K 2TH

T: 020 7529 5588

E: [rentals@wetherell.co.uk](mailto:rentals@wetherell.co.uk)

We aim to make our particulars both accurate and reliable. However they are not guaranteed; nor do they form part of an offer or contract. If you require clarification on any points then please contact us, especially if you're traveling some distance to view. Please note that appliances and heating systems have not been tested and therefore no warranties can be given as to their working order.



**Regulated  
Estate Agent  
and Letting Agent**

wetherell.co.uk