



WETHERELL
MAYFAIR'S FINEST PROPERTIES



CHARLES STREET, W1J

£1,430 PER WEEK

This striking two bedroom, two bathroom apartment is set across the second floor of one of Mayfair's most prestigious addresses.

This striking two bedroom, two bathroom apartment is set across the second floor of one of Mayfair's most prestigious addresses.

Recently refurbished to an exceptional standard, the apartment has a spacious reception room, period features including high ceilings and elegant décor.

CHARLES STREET IS CONVENIENTLY LOCATED FOR ALL THE EXCELLENT SHOPPING OF NEW BOND STREET AND IS CLOSE TO HYDE PARK, GREEN PARK AND ST JAMES' PARK WITH GREAT TRANSPORT FROM GREEN PARK AND BOND STREET UNDERGROUND.

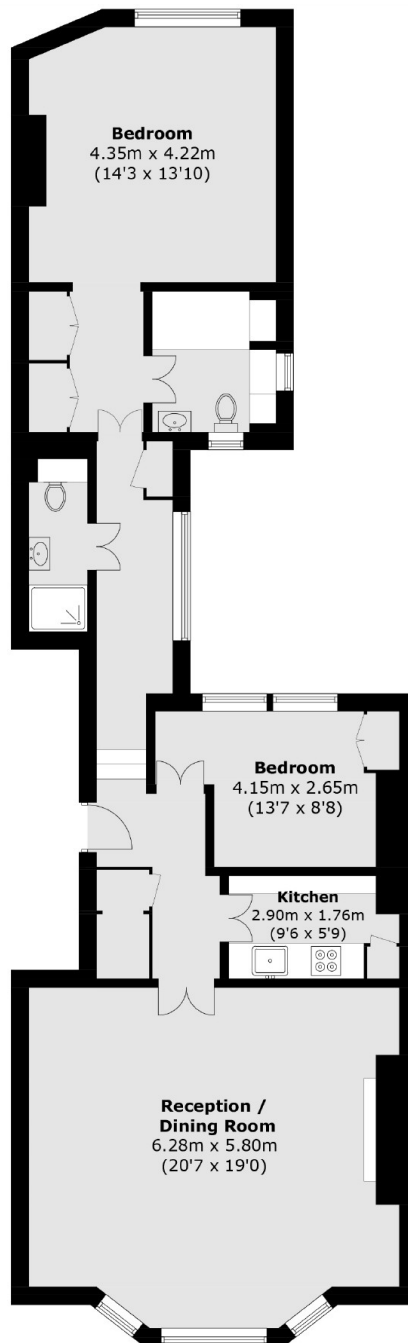


FEATURES

- Two Bedrooms • Two Bathroom • Contemporary Finish • Separate Kitchen • Second Floor • Excellent Location •



CHARLES STREET, LONDON, W1J



Area (approx.): 97.3 sq. m (1,047.3 sq. ft)



WETHERELL
MAYFAIR'S FINEST PROPERTIES

102 Mount Street,
London, W1K 2TH

T: 020 7529 5566

E: sales@wetherell.co.uk

We aim to make our particulars both accurate and reliable. However they are not guaranteed; nor do they form part of an offer or contract. If you require clarification on any points then please contact us, especially if you're traveling some distance to view. Please note that appliances and heating systems have not been tested and therefore no warranties can be given as to their working order.

wetherell.co.uk