



MADDOX STREET

MAYFAIR W1S

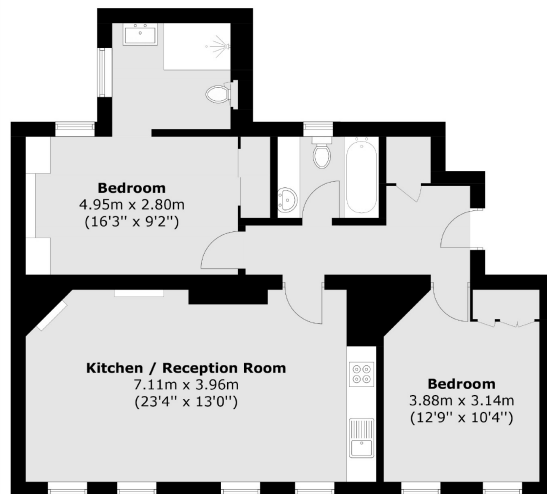


A BEAUTIFULLY PRESENTED TWO BEDROOM FLAT IN A FANTASTIC LOCATION
IN THE HEART OF MAYFAIR.



A beautifully presented two bedroom flat benefitting from an open plan luxury fitted kitchen and spacious reception room with floor to ceilings windows, two double bedrooms with ample built in storage, large principal bedroom with en-suite and a further shower room.

Maddox Street is a nestled in the heart of Mayfair between Regents Street and New Bond Street. Maddox Street is know for its luxury boutiques, contemporary art galleries and enticing culinary offerings.



Area (approx.): 73.4 sq. m (790.1 sq. ft)

FEATURES

- Two Double Bedrooms
- Two Modern Bathrooms
- Luxury Fixtures, Fittings and Furnishings
- Wooden Flooring in Living Areas
- Excellent Location
- Large Bay Windows

Price: £1,525 Per week

We aim to make our particulars both accurate and reliable. However they are not guaranteed; nor do they form part of an offer or contract. If you require clarification on any points then please contact us, especially if you're traveling some distance to view. Please note that appliances and heating systems have not been tested and therefore no warranties can be given as to their working order. Energy Rating:



WETHERELL
MAYFAIR'S FINEST PROPERTIES

102 Mount Street • London • W1K 2TH
T: 020 7529 5588 E: rentals@wetherell.co.uk
wetherell.co.uk

NO ONE KNOWS MAYFAIR BETTER THAN WETHERELL