

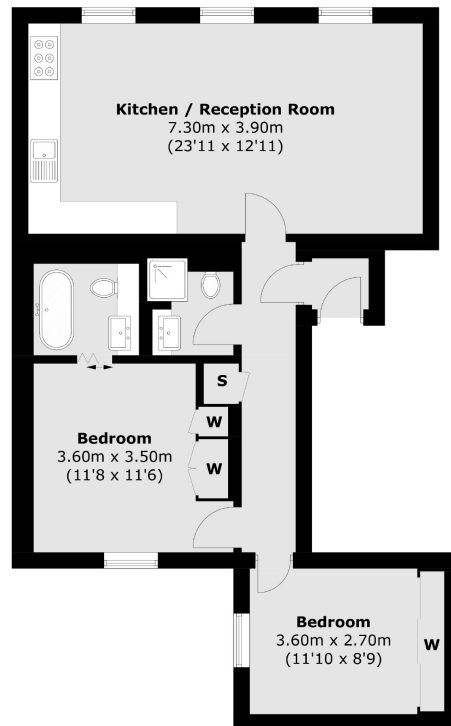


# BRUTON PLACE

## MAYFAIR W1J



THIS INTERIOR DESIGNED TWO BEDROOM APARTMENT IS SITUATED ON THE FIRST FLOOR OF THIS RECENTLY REDEVELOPED BUILDING ON A QUIET MAYFAIR MEWS OFF BERKELEY SQUARE MOMENTS FROM BOND STREET AND MOUNT STREET.



The apartment has been finished to the highest specification including underfloor heating, solid wood flooring to the hall and reception room, luxury tiled bathroom and fully integrated kitchen with high quality appliances.

The apartment has been tastefully decorated and interior designed throughout to provide smart stylish living space in a sought after location.

Bruton Place is within close proximity to New Bond Street, Mount Street and has excellent transport links including Green Park and Bond Street underground stations.

#### FEATURES

- Two Double Bedrooms
- Two Bathrooms
- Open Plan Kitchen/Living
- Underfloor Heating
- Built-in Storage
- Excellent Location

Price: £1,050 Per week

We aim to make our particulars both accurate and reliable. However they are not guaranteed; nor do they form part of an offer or contract. If you require clarification on any points then please contact us, especially if you're traveling some distance to view. Please note that appliances and heating systems have not been tested and therefore no warranties can be given as to their working order. Energy Rating: D



**WETHERELL**  
MAYFAIR'S FINEST PROPERTIES

102 Mount Street • London • W1K 2TH  
T: 020 7529 5588 E: [rentals@wetherell.co.uk](mailto:rentals@wetherell.co.uk)

[wetherell.co.uk](http://wetherell.co.uk)

NO ONE KNOWS MAYFAIR BETTER THAN WETHERELL