



Regent Square, WC1H

£525,000

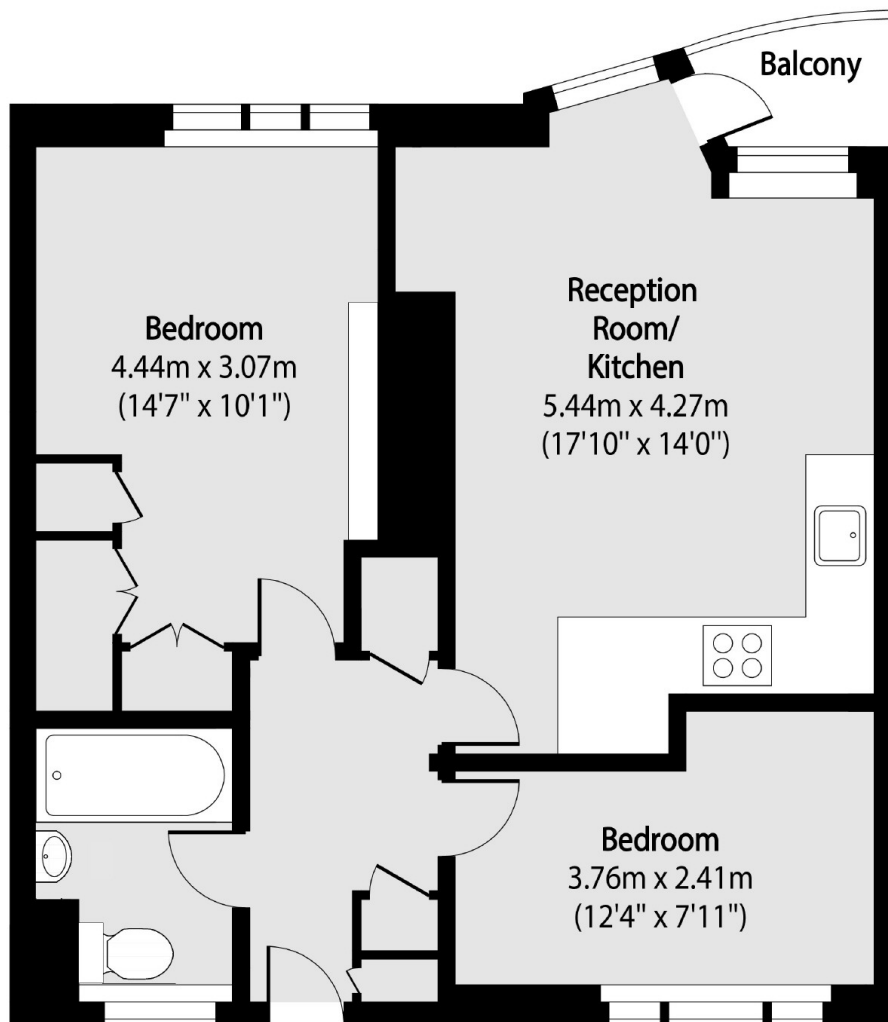
This fourth floor apartment features two generous double bedrooms and a private balcony overlooking a peaceful garden square. The newly fitted John Lewis kitchen is equipped with quartz worktops and Amtico flooring, combining style and durability for everyday living.

The property is situated on Regent Square, providing convenient access to Gray's Inn Road and the vibrant Brunswick Centre. Ideally positioned between Angel and London King's Cross, the apartment offers seamless connections to the City and West End, making it perfect for both work and leisure.

Features

- Two Double Bedrooms
- Excellent Condition
- Private Balcony
- Overlooking Garden Square
- Parking Available
- No Onward Chain

Regent Square,
London, WC1H



Total area (approx): 55.83 sq m (601 sq. ft)

Terrace total area (approx): 1.76 sq m (19 sq. ft)