



Gray's Inn Road, WC1X

£575 Per week

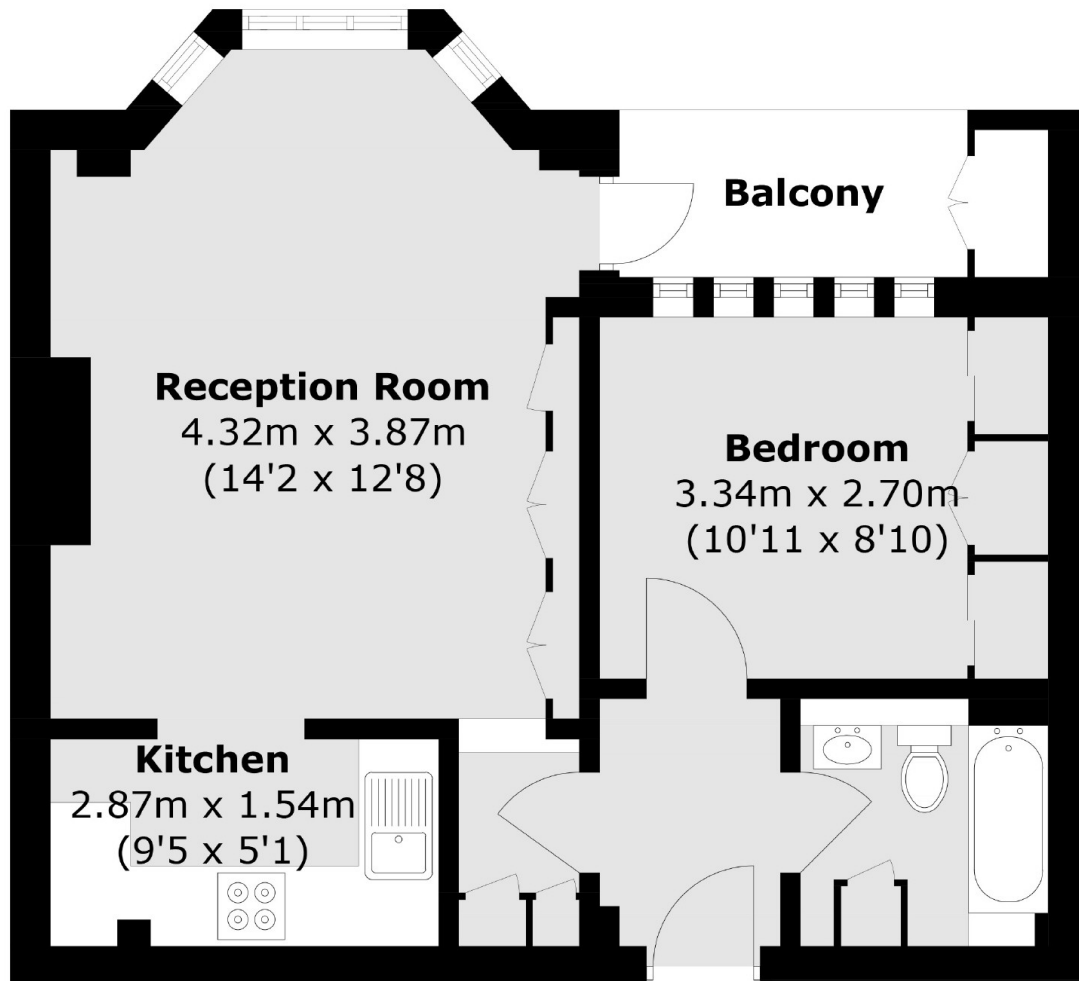
A very well presented one bedroom apartment in this popular block on Grays Inn Road. The property has bright open plan kitchen reception room and a double bedroom with good storage space.

Trinity Court is located a short walk away from King's Cross Station making it an ideal location for those wanting to be close to local transport and local amenities including an array of shops, restaurants and bars.

Features

- Open Plan Living
- Balcony
- Bright
- Secure Building
- Purpose Built
- Kings Cross Close By

Gray's Inn Road,
London, WC1X



Total area (approx.): 41.8 sq. m (449.9 sq. ft)
(Excluding External Cupboard)
Balcony area: 3.2 sq. m (34.4 sq. ft)

Dexters

Bloomsbury
55-56 Coram Street
London
WC1N 1HB
Lettings
020 7833 4488

Energy Rating: D. We aim to make our particulars both accurate and reliable. However they are not guaranteed; nor do they form part of an offer or contract. If you require clarification on any points then please contact us, especially if you're traveling some distance to view. Please note that appliances and heating systems have not been tested and therefore no warranties can be given as to their good working order.

 **RICS** | Regulated
Estate Agent
and Letting Agent

[dexters.co.uk](https://www.dexters.co.uk)