

## Flaxman Terrace, WC1H

£2,650 Per week

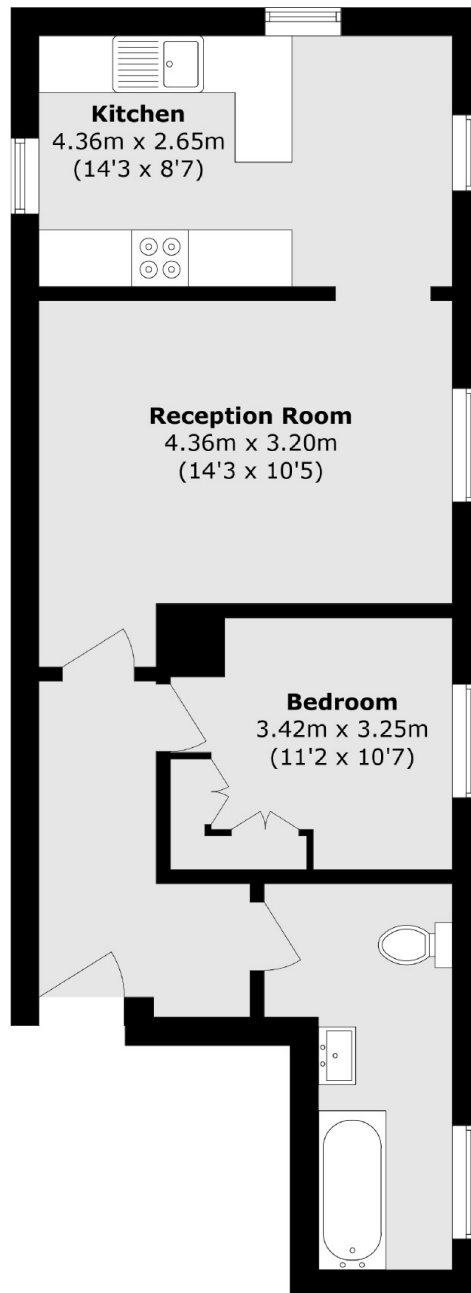
A well-presented one-bedroom flat situated on Flaxman Terrace. The property features a spacious double bedroom, large windows providing plenty of natural light, a modern finish throughout, and a fully equipped kitchen. The building also benefits from lift access.

Flaxman Terrace is ideally located for access to King's Cross, Euston, and Russell Square, offering excellent transport links and a great selection of local shops, cafes, and restaurants nearby.

### Features

Prime Location  
Lift Access  
One Bedroom  
Excellent Transport Links  
Modern  
Furnished

# Flaxman Terrace, London, WC1H



Total area (approx.): 48.7 sq. m (524.2 sq. ft)

## Dexters

Bloomsbury  
55-56 Coram Street  
London  
WC1N 1HB  
Lettings  
020 7833 4488

Energy Rating: . We aim to make our particulars both accurate and reliable. However they are not guaranteed; nor do they form part of an offer or contract. If you require clarification on any points then please contact us, especially if you're traveling some distance to view. Please note that appliances and heating systems have not been tested and therefore no warranties can be given as to their good working order.

 **RICS** | Regulated  
Estate Agent  
and Letting Agent

[dexters.co.uk](https://www.dexters.co.uk)