



High Holborn, WC1V
£2,250,000

Dexters



High Holborn, WC1V

Rarely available, this penthouse is a truly distinctive residence located in the heart of Holborn. Finished to a high standard throughout, the property offers refined luxury living with a strong sense of character. It further benefits from an allocated parking space, lift access, and a professional concierge service. A particular highlight is the expansive private terrace, providing an exceptional setting for entertaining or enjoying open-air living above the city.

This exceptional property features two generously sized bedrooms, with the versatile option to create a third, offering flexible accommodation to suit a variety of lifestyle needs. At the heart of the home lies a spacious open-plan reception and kitchen area, thoughtfully designed for modern living and ideal for both relaxation and entertaining. A striking highlight is the impressive 180-degree wraparound terrace, providing expansive outdoor space and flooding the interior with natural light. This seamless blend of indoor and outdoor living creates the perfect setting for entertaining or simply enjoying panoramic city views.

High Holborn occupies a prime position in the heart of Bloomsbury, just moments from Holborn Underground station, offering excellent transport links via the Central and Piccadilly lines. The surrounding area is celebrated for its historic character, elegant garden squares, and renowned cultural institutions, while also benefiting from close proximity to Covent Garden, Soho, and the West End, which together provide an outstanding array of restaurants, retail

Features

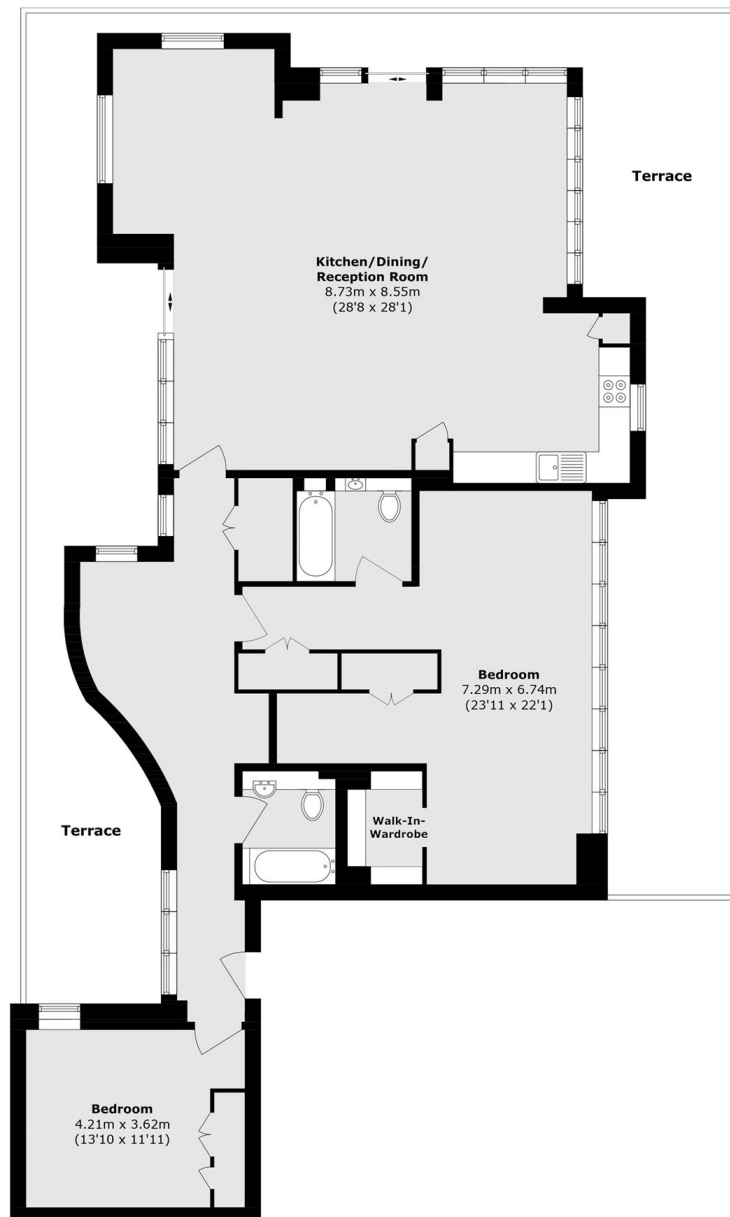
- 7th Floor Penthouse
- Allocated Parking Space
- Concierge
- Large Private Terrace
- Lift Access
- No Onward Chain







High Holborn, LONDON, WC1V



Seventh Floor

Total area (approx.): 154.9 sq. m (1667.3 sq. ft)

Terrace area (approx.): 86.3 sq. m (928.9 sq. ft)

Dexters

Bloomsbury
55-56 Coram Street
London
WC1N 1HB
Sales
020 7833 4466

Energy Rating: D. We aim to make our particulars both accurate and reliable. However they are not guaranteed; nor do they form part of an offer or contract. If you require clarification on any points then please contact us, especially if you're traveling some distance to view. Please note that appliances and heating systems have not been tested and therefore no warranties can be given as to their good working order.

 **RICS** | Regulated
Estate Agent
and Letting Agent

[dexters.co.uk](https://www.dexters.co.uk)