

## Northdown Street, N1

### £600,000

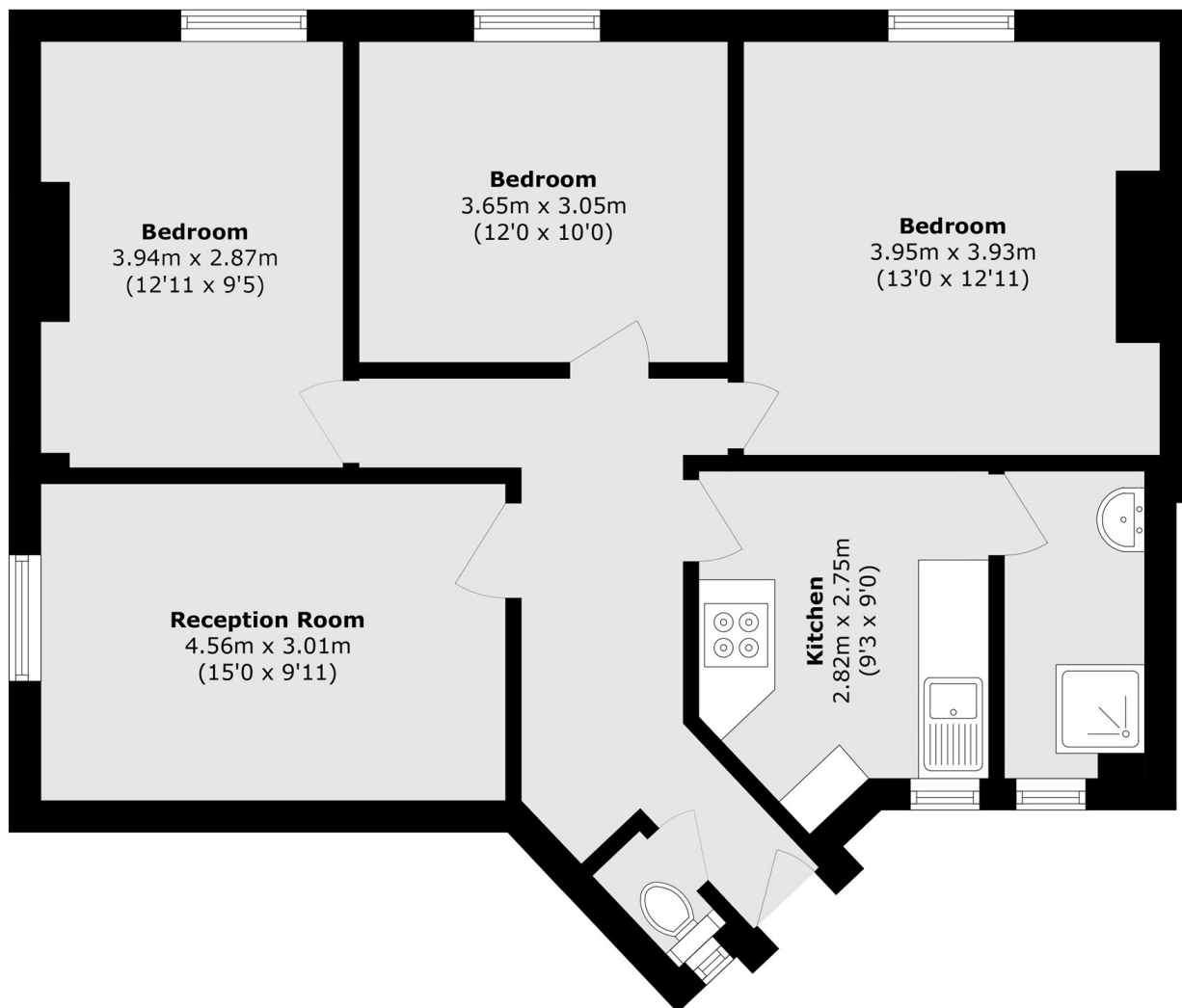
A bright and spacious two bedroom apartment in a charming period mansion block moments from King's Cross. Featuring an open-plan kitchen/reception, low service charge, and no onward chain. Another benefit is the seller was generating a 6.2% yield.

Pollard House is ideally situated on Northdown Street, just a short walk from King's Cross and St Pancras International, offering superb transport links via six Tube lines, National Rail, and Eurostar services. Close to Coal Drops Yard and Granary Square, where designer shops, cafés, restaurants, and cultural spaces create a lively, modern atmosphere.

### Features

- King's Cross
- Two Bedroom
- Low Service Charge
- No Onward Chain
- Period Mansion Block
- Open Plan

# Northdown Street, London, N1



Total area (approx.): 78.2 sq. m (841.7 sq. ft)