



Brunswick Centre, WC1N

£710,000

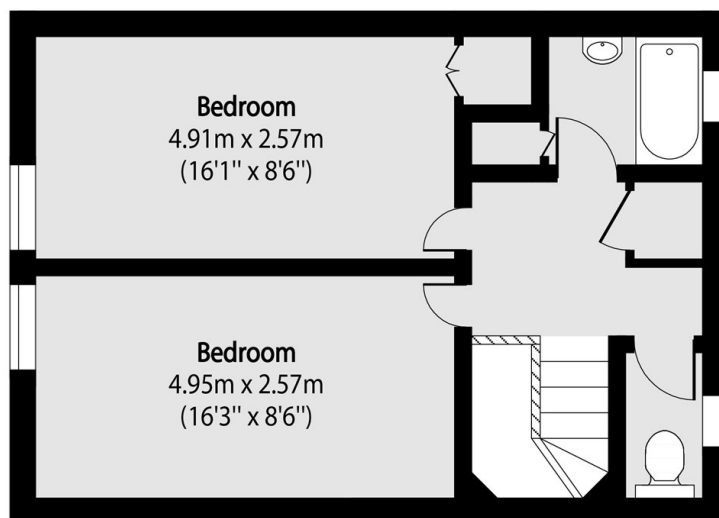
Rare to the market, this two-bedroom split-level flat in the Brunswick Centre. Set over two floors this apartment is bright, airy and spacious (circa 850 sq.ft). This property has a private balcony and is sold with no onward chain.

The Brunswick Centre is a vibrant shopping and residential complex located in the heart of Bloomsbury, Central London. It is well-connected with easy access to major transport links, including Russell Square and Holborn stations, as well as nearby King's Cross station, providing excellent national and international travel options.

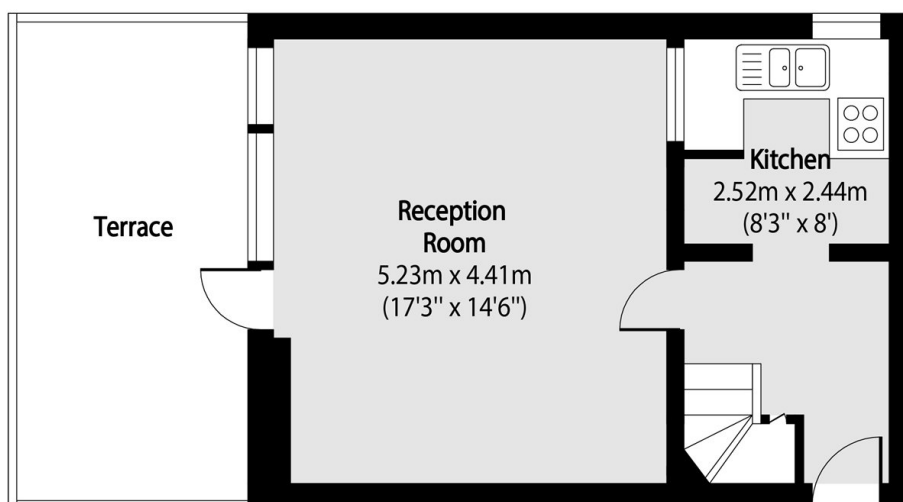
Features

- Split-Level
- No Onward Chain
- Private Balcony
- Lift Access
- Brunswick Centre
- Central Location

Brunswick Centre, London, WC1N



Second Floor



First Floor

Total area (approx): 79.22 sq m (853 sq. ft)

Terrace total area (approx): 14.58 sq m (156 sq. ft)