



Cromer Street, WC1H

£375,000

A great size studio apartment located on the 2nd floor with a separate kitchen and Juliette balcony. The property would make a perfect first home, London base or 'buy to let' investment.

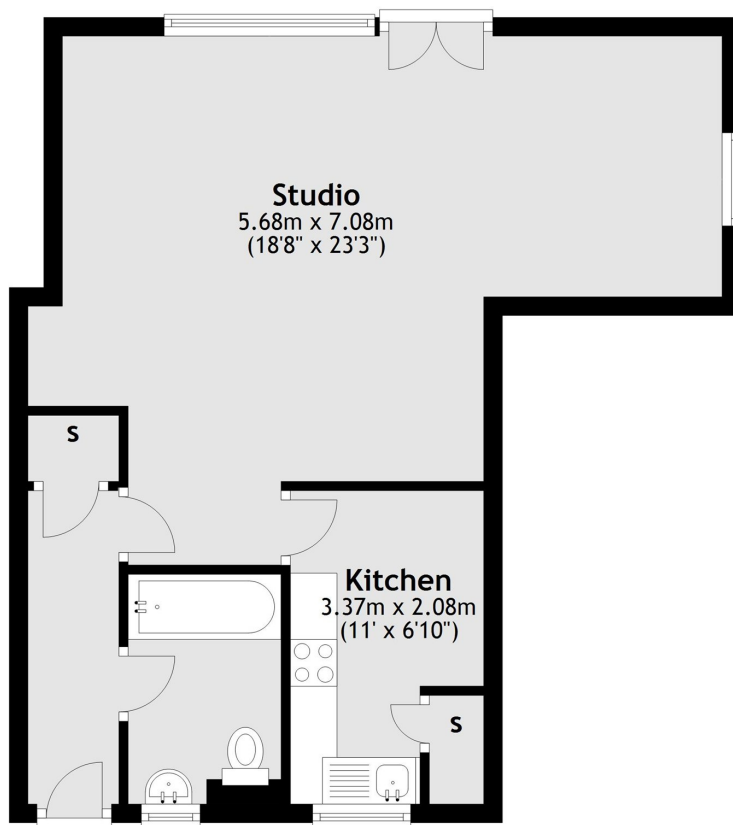
Bramber is set in the heart of Bloomsbury and offers everything from independent cafés to High Street chains within The Brunswick Centre. The nearest tube station is Russell Square, and King's Cross is less than a quarter mile away.

Features

- 500 Sq Ft Studio
- Juliette Balcony
- 118 Year Lease
- Adjacent Park
- Excellent Transport Links
- No Onward Chain

Cromer Street, London, WC1H

Second Floor



Total area: approx. 46.4 sq. metres (499.8 sq. feet)